

Adding a Youtube Mashup to Your Course

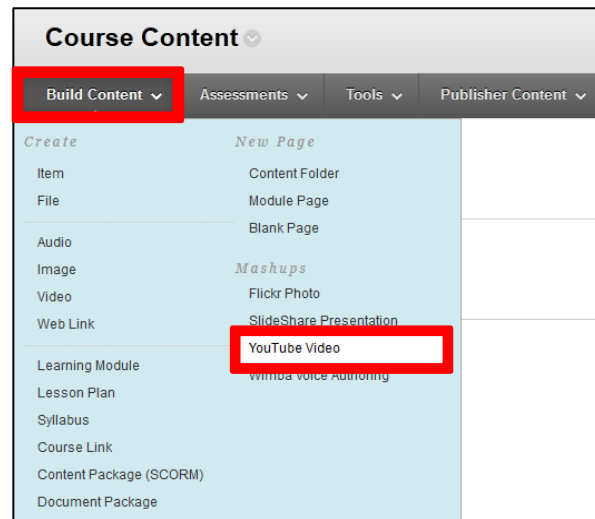
Mashups are used to add multimedia content to your course from external sources. You can add videos from external sources such as Youtube as an easy way to provide students with instructive and engaging video content.

This document will show you how to:

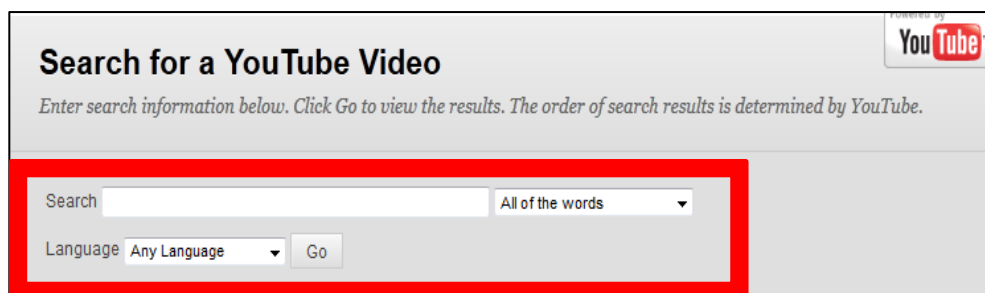
- Search for and add a Youtube video
- Set the Youtube Video options

Search For and Add a Youtube Video:

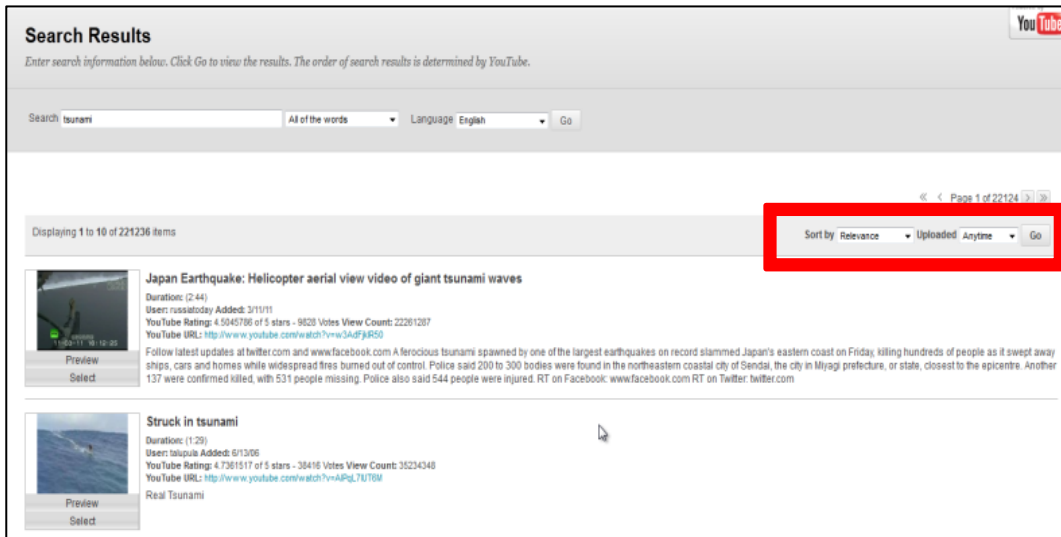
1. Open a **Content Area**.
2. Go to **Build Content** and under **Mashups**, select **Youtube Video**.



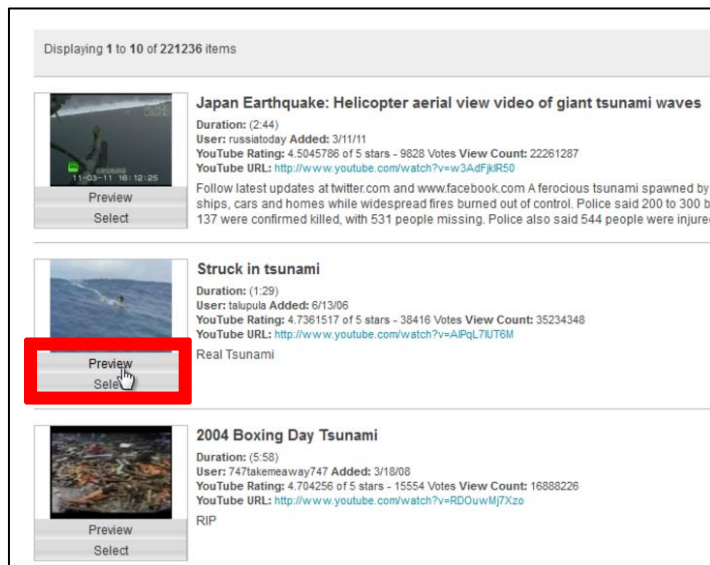
3. Enter keywords in the **Search** bar.
4. Select the **Parameters** for the search.
5. Select the **Language** for the search.
6. Click **Go**.



7. (Optional) Sort your search results using the **Sort By** menu



- 8. Click on **Preview** to preview your video.
- 9. When you have found your video, click **Select**.





Learning Connect



- In the **Options** section, set if you want the link to be available to users, if you want the number of views to be tracked, and the desired date restrictions for the tool link.

4. Options

Permit Users to View this Content Yes No

Track Number of Views Yes No

Select Date and Time Restrictions Display After  
Enter dates as mm/dd/yyyy. Time may be entered in any increment.

Display Until  
Enter dates as mm/dd/yyyy. Time may be entered in any increment.

- Click **Submit**.