

EARSIM VR Setup Guide

This guide will walk you through setting up your Meta Quest headset for running the **EARSIM** game on your Windows PC.

Requirements

- **Meta Quest Headset:** Quest 2, Quest 3, or Quest 3S

This tutorial uses a Quest 3S

- **Windows PC** with a good graphics card (ideally **RTX 3060** or better)
- **Link Cable (USB-C to USB-A)**
 - [Official Meta Link Cable](#)
 - Or a third-party USB 3.0 cable (at least 3 meters long)
- **EARSIM game zip file**

Connecting Your Headset to PC


If you already have Meta Quest Link installed and set up for your headset on your PC, you can skip to Step 5.

1. Download Meta Quest Link Software

Download and install the official Meta Quest Link from [here](#).

Meta Quest Ray-Ban Meta Apps and games About Meta Support Search

Getting Started



1. Install the Meta Quest Link app on your Windows computer

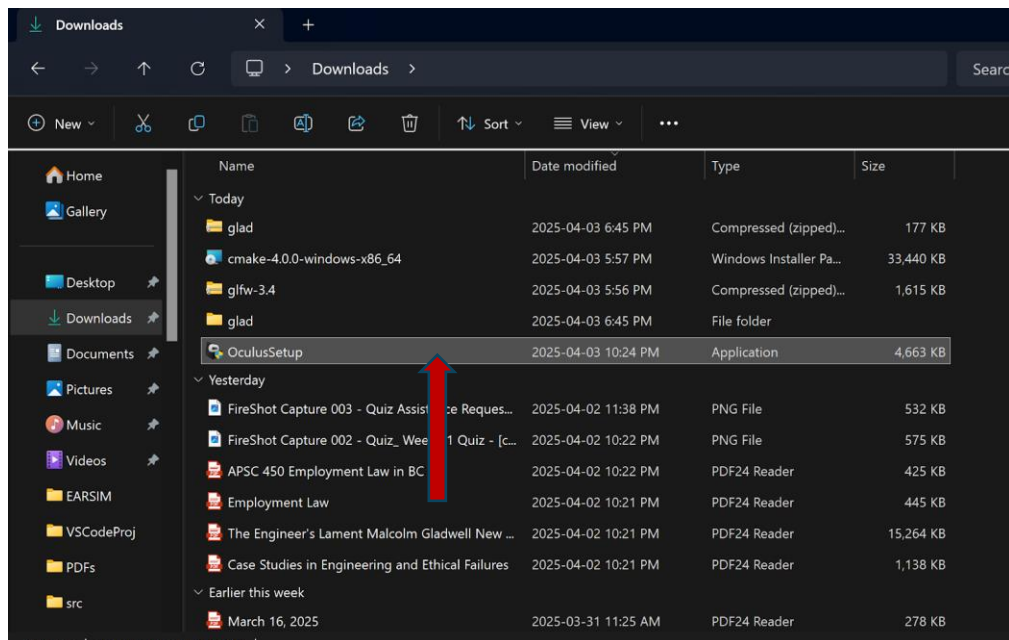
You'll need at least 4GB of space on your computer and a Windows computer that meets our minimum requirements to install the app.

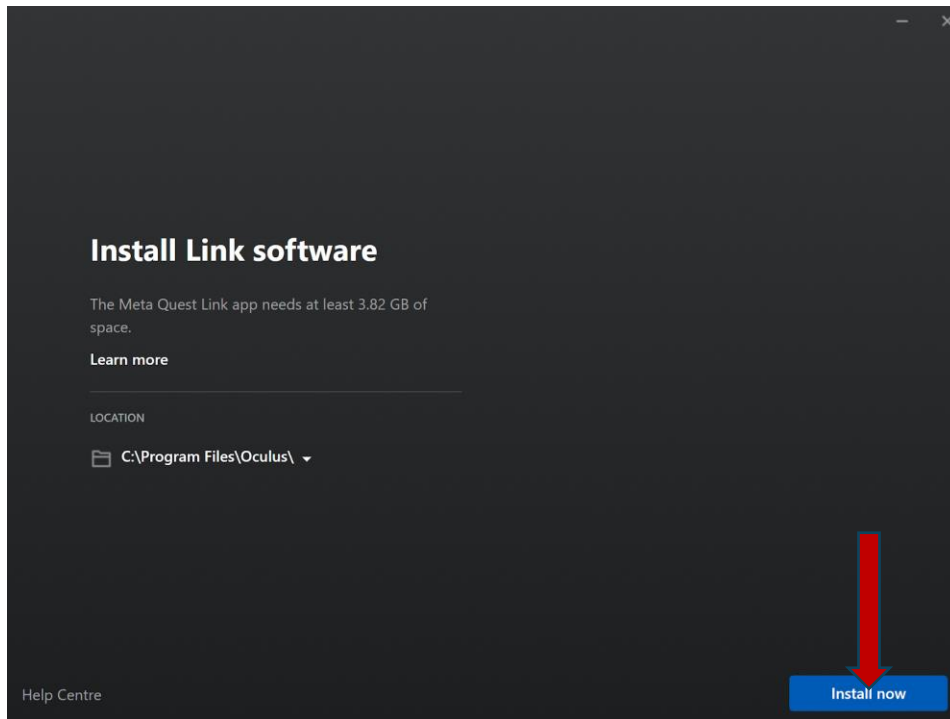
[Download app](#)

[Learn more about Oculus Link PC requirements](#)

2. Install Oculus Software

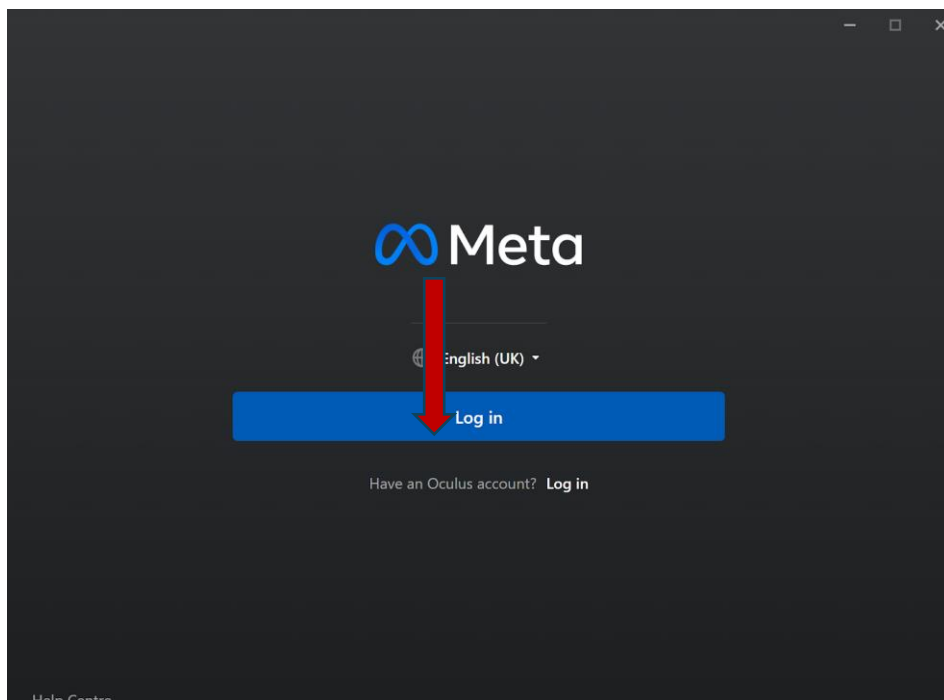
- Run `oculussetup.exe`
- Click **Install Now**
- Wait for installation to complete





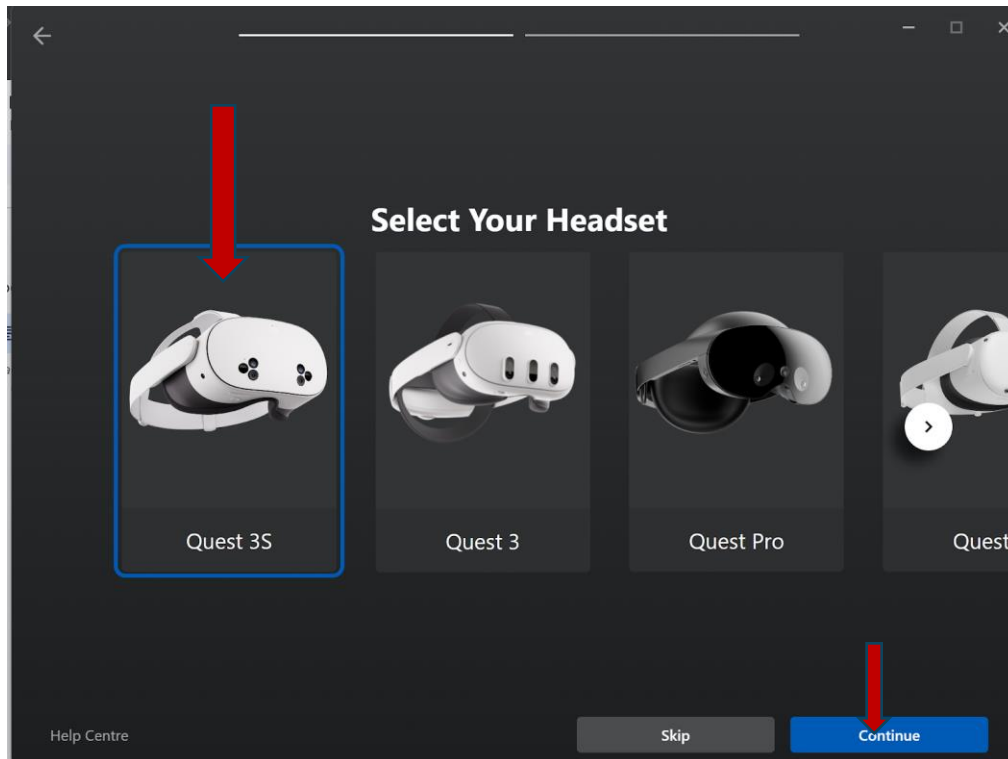
3. Log Into Meta

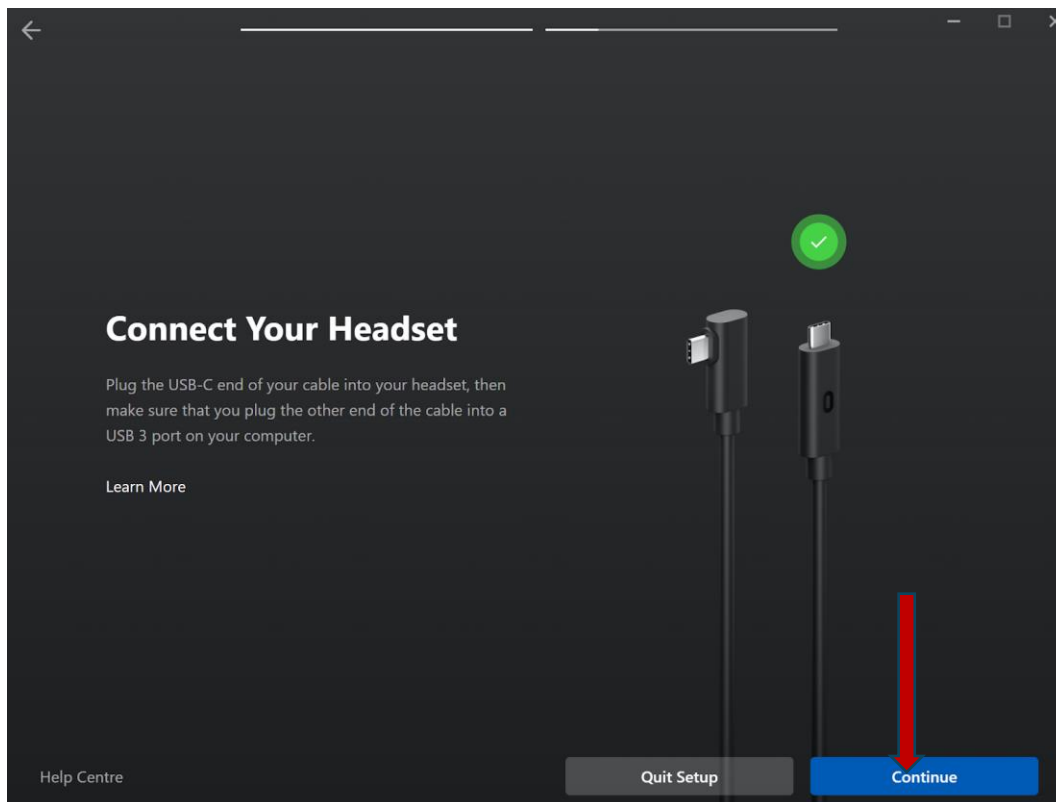
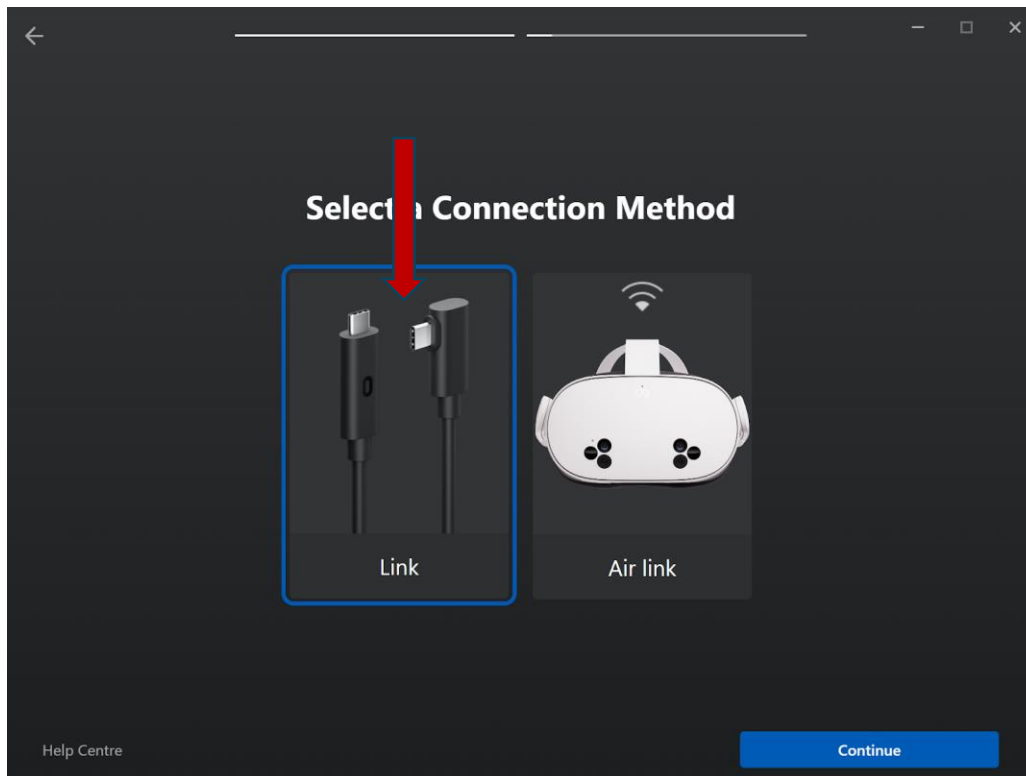
- After installation, create or log into your **Meta** account via the browser as prompted

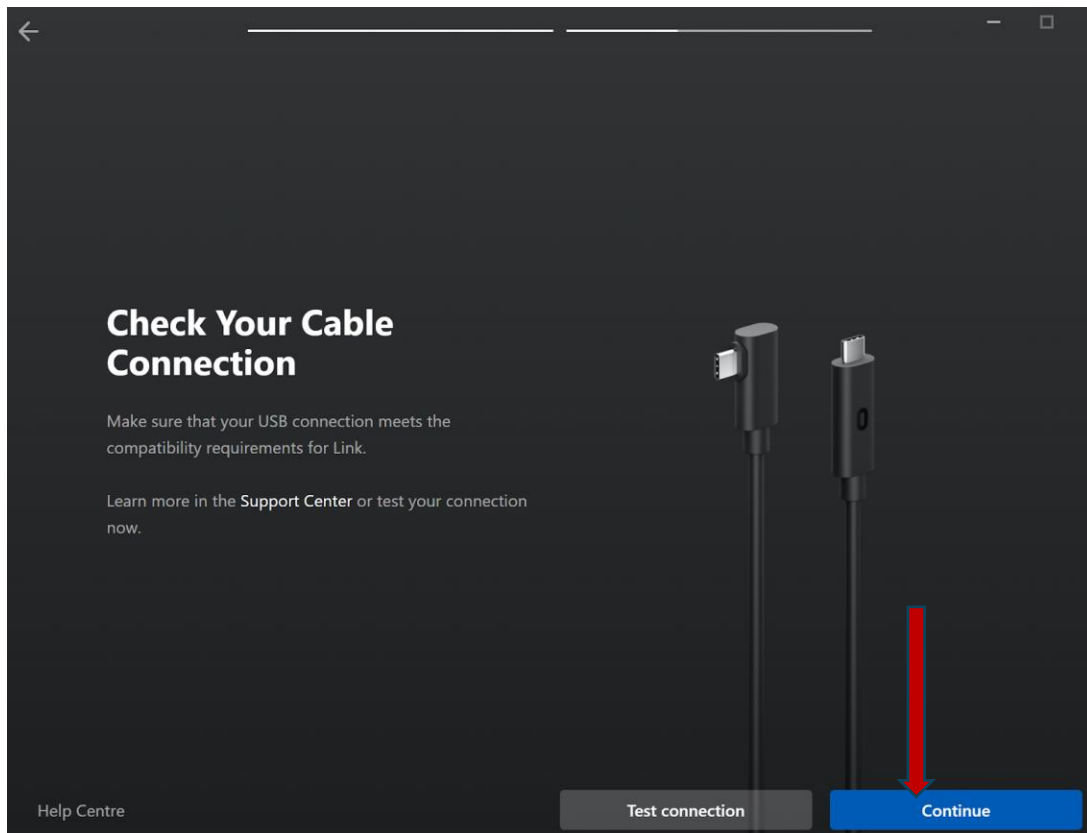


4. Setup Headset Connection

- Select your headset model
- Choose **Link (Cable)** as the connection method
- Connect your headset to the PC using a **USB 3.0-supported cable and port**
- Click **Continue** on your PC
- Click **Continue** again





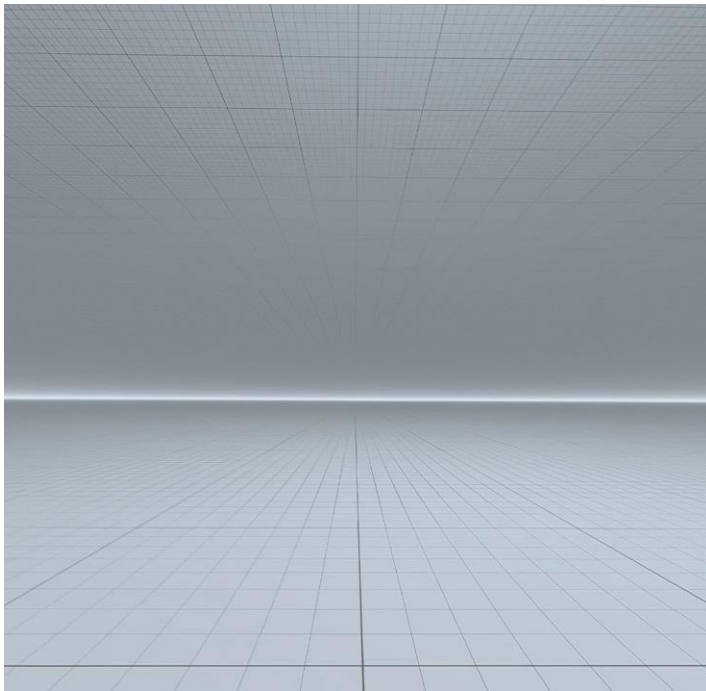


5. Connect

- If you haven't already, connect your headset to the PC using a **USB 3.0-supported cable and port**
- Power on the headset and put it on
- In the headset, **allow the Link connection** when prompted
- If prompted, set up the boundary. Sometimes the headset may not connect properly if the boundary isn't configured.



You'll see a loading screen inside the headset followed by a virtual environment (we'll refer to it as the **grey space**).



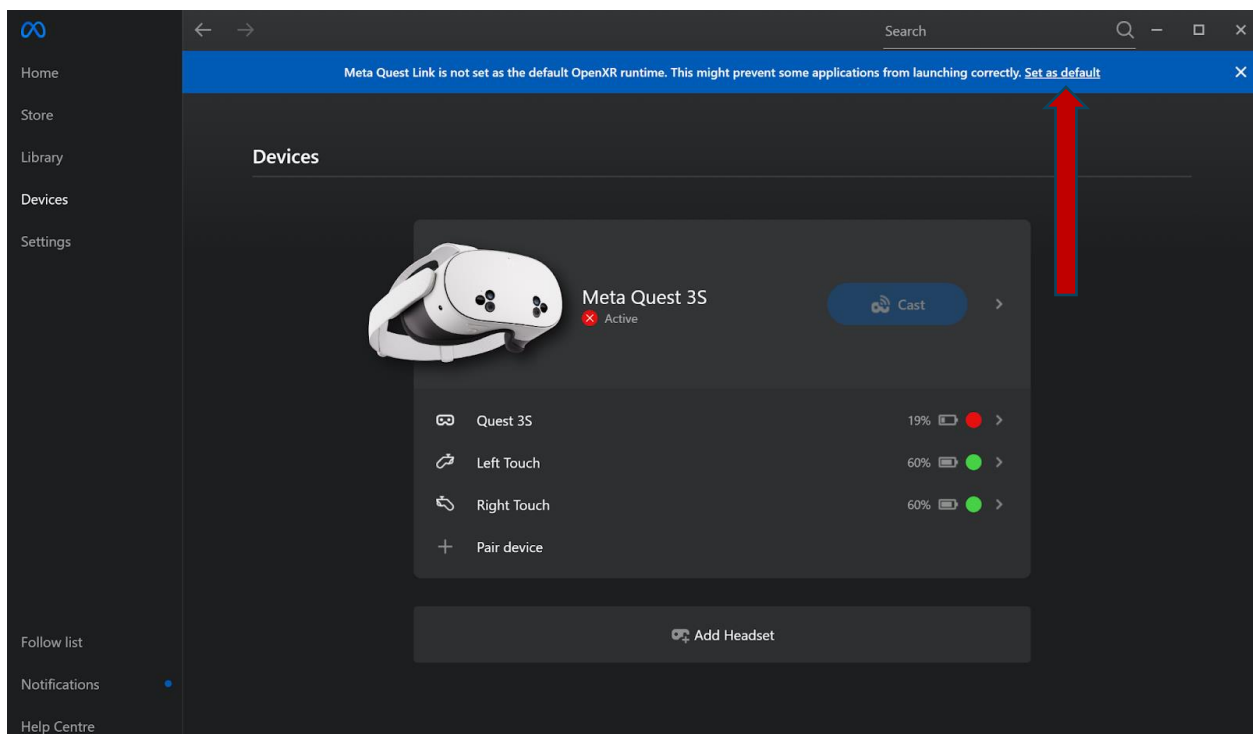
Once you're in the grey space, your headset is ready to start the game!

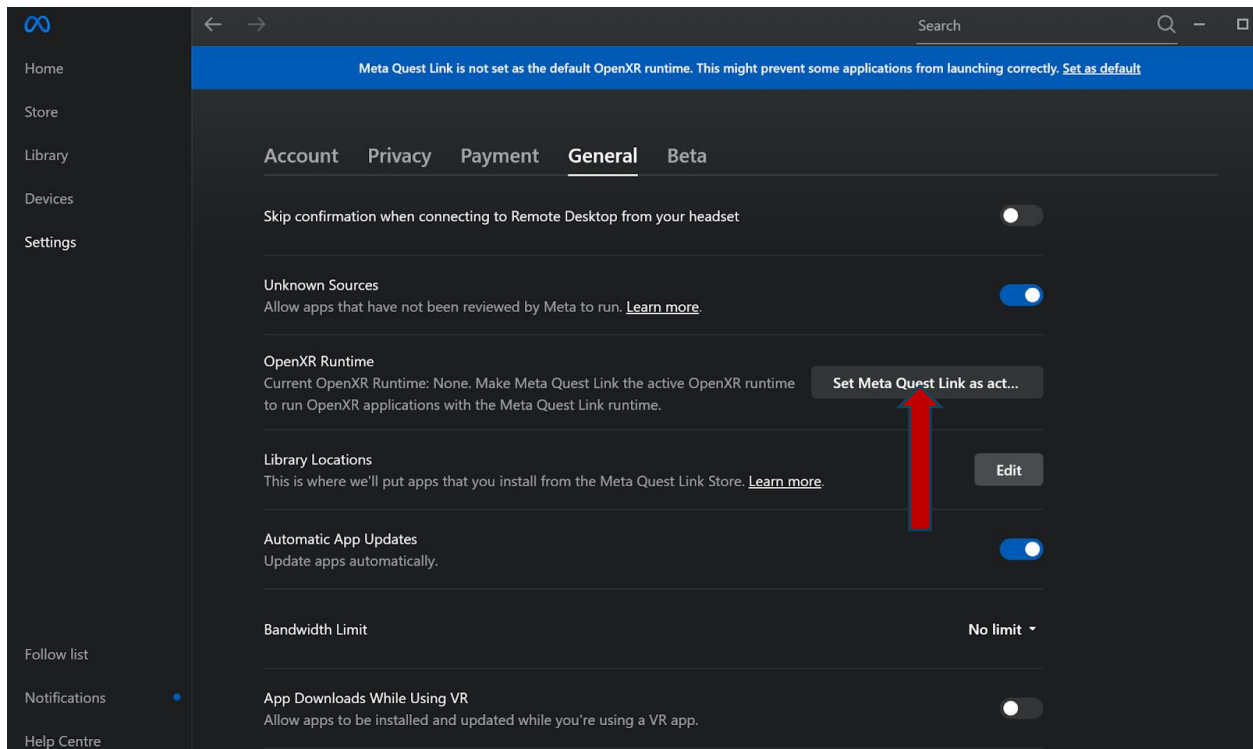
OpenXR Runtime Warning

If you see:

“Meta Quest Link not set as default OpenXR runtime”

Click **Set as Default**, then confirm again by selecting **Set Meta Quest Link as active**.

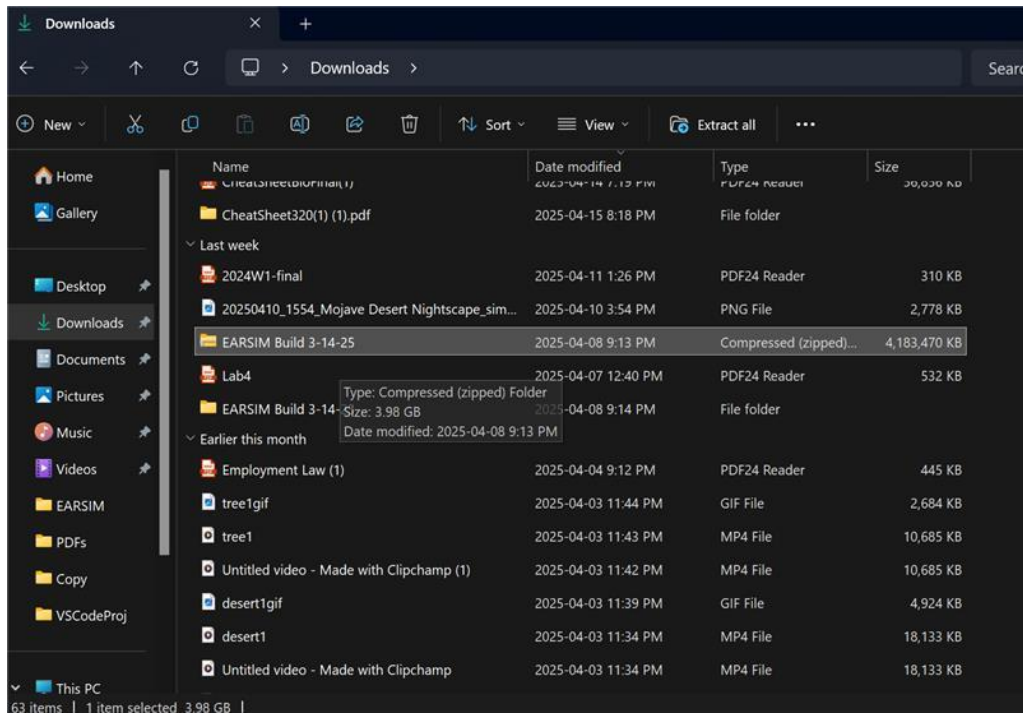




Starting the Game

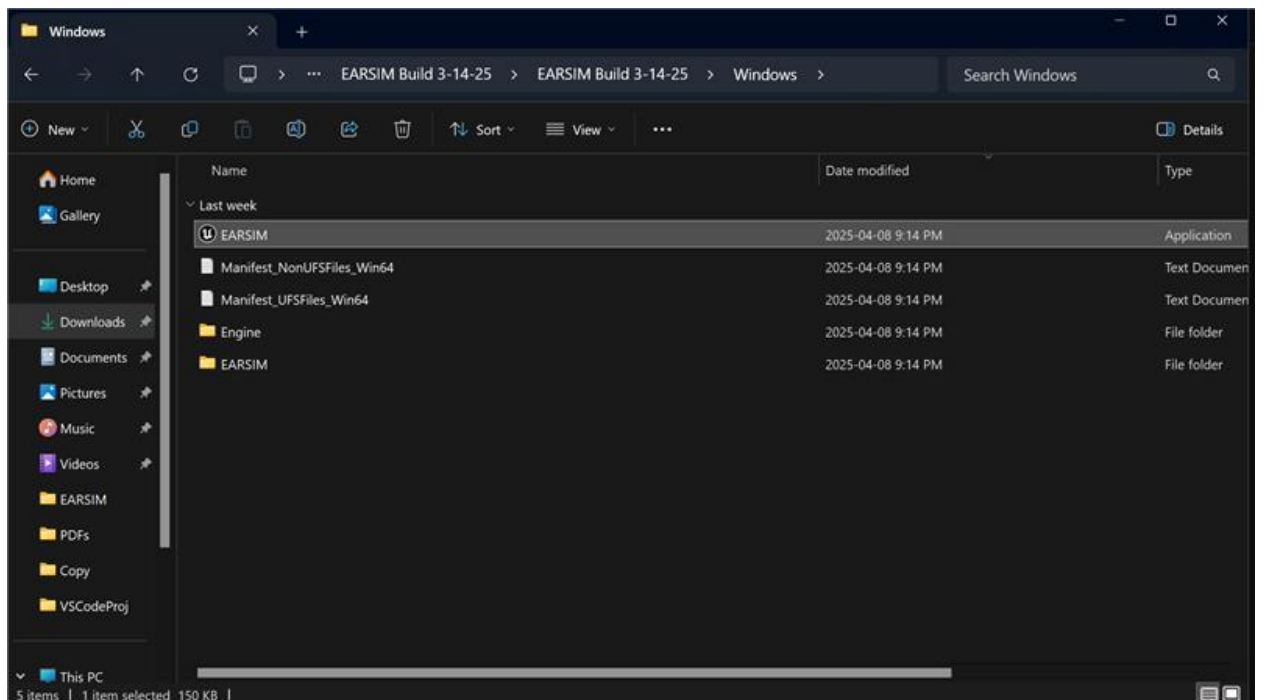
1. Extract the Game Files

- Right-click on the earsimbuild.zip file
- Select **Extract All...**
- Choose a destination folder



2. Launch the Game

- In the extracted folder, find the executable named EARSIM (EML Demo Space location: Irving K. Barber Learning Centre, room 183)
- Double-click to launch



If the headset is connected properly, the game will launch inside your headset.

Put on your headset and enjoy!

Debugging Suggestions

- **Make sure to set up your boundary in the headset before connecting.**
- If the “Enable Link” window doesn’t appear in the headset, you can manually enable it from the universal menu (left of the menu bar). Detailed steps are available [here](#).
- If the game freezes, try relaunching it on your PC and reconnecting the headset by unplugging and plugging it back in.