

Engaging the Global Past through Relational Course Revision



Reflections on the Impact of Student-Faculty Partnerships

Dr. Sara Ann Knutson, UBC History & Medieval Studies

Abbie Collett, UBC History & Medieval Studies

Madi Garbuz, UBC Ancient Mediterranean and Near Eastern Studies

Joel Hung, UBC Medieval Studies

Session Objectives

By the end of this session, you will be able to:

- (1) describe the “Student as Partners” (SaP) approach and how it can be used to creatively address pedagogical challenges
- (2) identify some examples of what the “Student as Partners” approach can respectively offer faculty and student partners
- (3) interrogate the impact that relational pedagogies like “Students as Partners” can have in and beyond the classroom
- (4) begin brainstorming some ways that this approach might be applied to a current or future pedagogical challenge or initiative in your own context.

The SaP Project (May- September 2025)

- Institutional directive in 2024W to transform year-long (two-term) courses in the Faculty of Arts
- **Students as Partners (SaP):** *a pedagogical approach that aims to transform teaching and learning by directly involving students into the design, research, and/ or development of pedagogical practices and curriculum*
- Case study: HIST 101: Global History before 1500 CE
- Received an external grant that covered the student partners' salaries

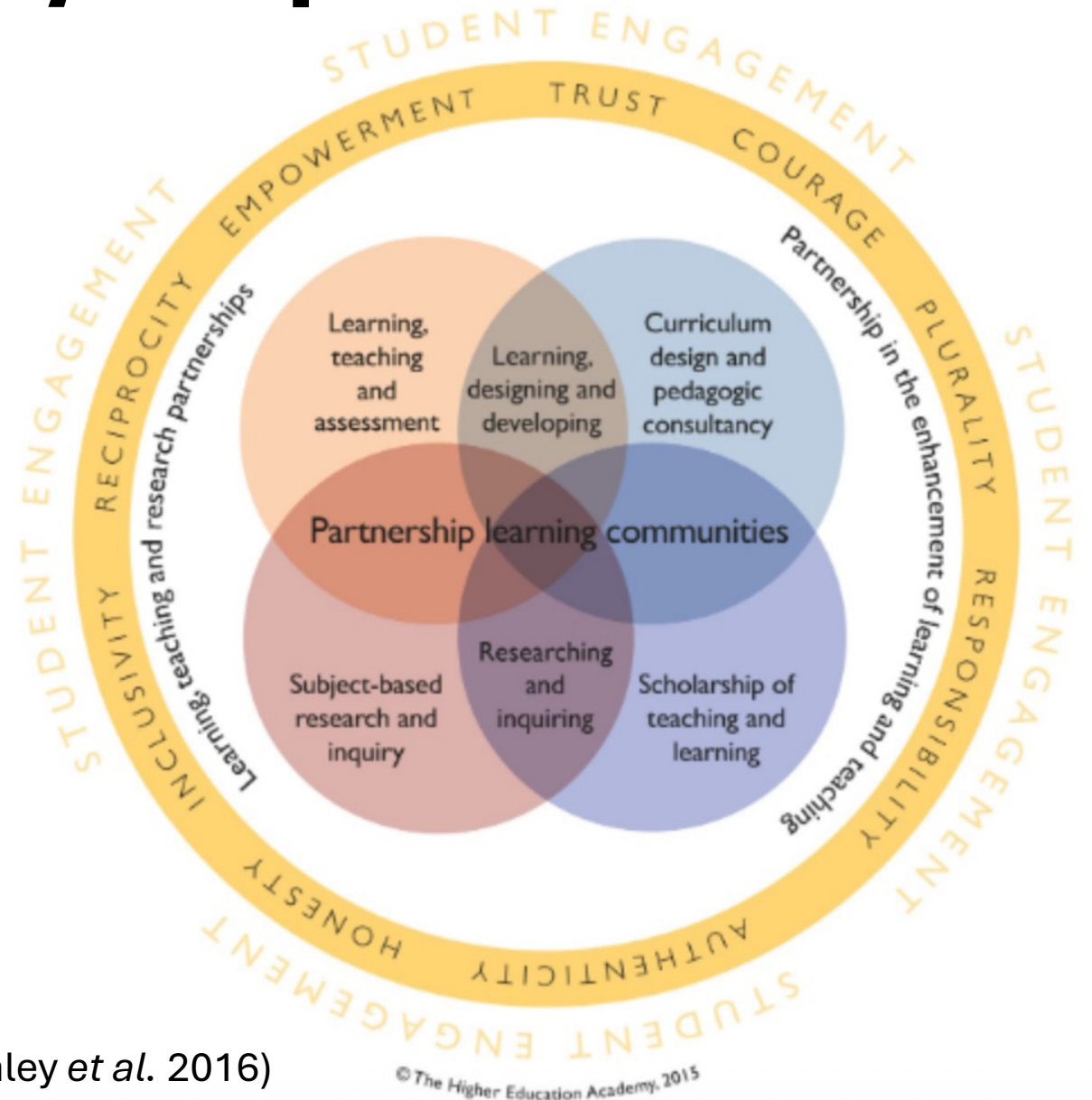


Figure: SaP in learning and teaching in higher education (Healey et al. 2016)

Madi Garbuz (AMNE Major)

- Learning about course learning objectives and how they map onto smaller class learning activities and objectives
- Reflecting on not only *what* is being taught, but *how*
- Personal growth
- Independent project: designing and leading a tutorial for HIST 101 (2025W cohort)

Abbie Collett (History Major)

- Personal Development
- Academic Learning
- Pedagogical Practices
- Job opportunities based on professional development
- Independent project: short lecture and activity: opening the conversation on AI in the Humanities analyzing genAI in the History classroom

Joel Hung (Medieval Studies Major)

- Understanding the process behind pedagogical decision-making and course (re)design
- Discussion in the partnership on genAI and student and faculty experiences
- Partnership as a collaborative discussion
- Self discovery
- Independent project: timeline infographic based on historical societies covered in the redesigned courses

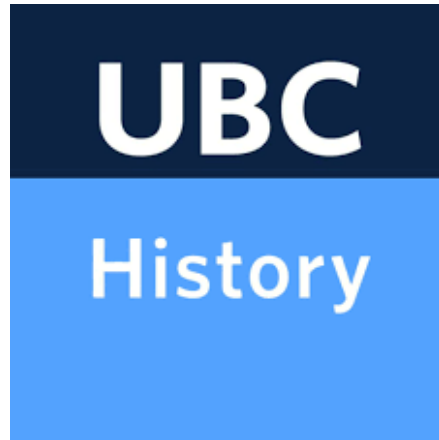
Conclusions and new beginnings...

Take one minute to brainstorm:

- (1) What is one pedagogical challenge that you are currently facing?**
- (2) Based on what you have heard, how might you apply SaP to address that pedagogical challenge? What might you take away from a SaP partnership that you would not receive from addressing the challenge on your own?**

You are encouraged to consider how you would enter into such a partnership (*as an undergraduate student, graduate student, staff member, faculty member, community member, etc*)

Thank you



sa.knutson[a]ubc.ca
abbiecollett18[a]gmail.com
jhung43123[a]gmail.com
Madigarbuz11[a]gmail.com



@ubcmedieval on Instagram

Title image credit: Gold Foil Rhinoceros, Kingdom of Mapungubwe (1075- 1220 CE);
Housed at University of Pretoria Museums, South Africa