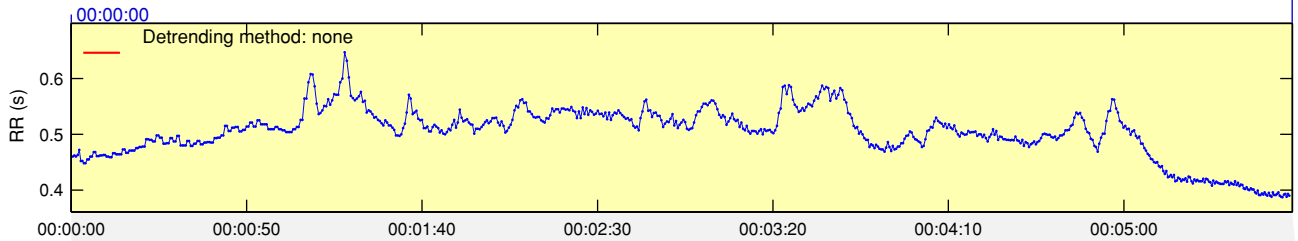


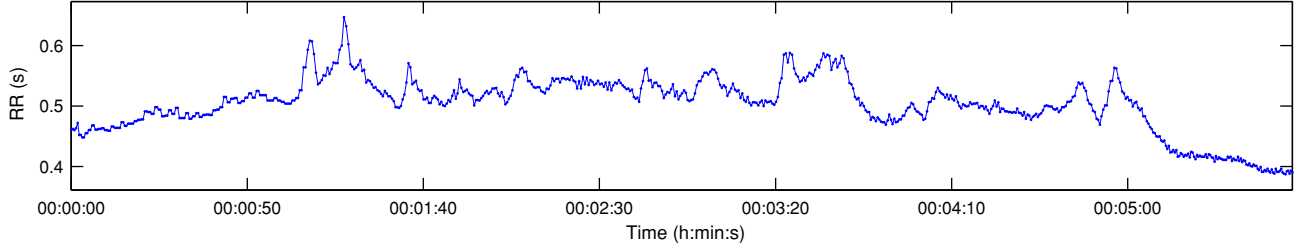
RR Interval Time Series

Results for a single sample

00:05:48



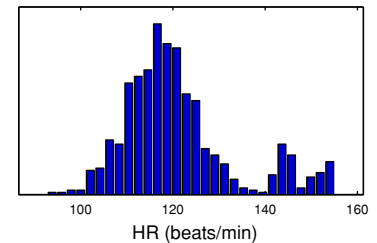
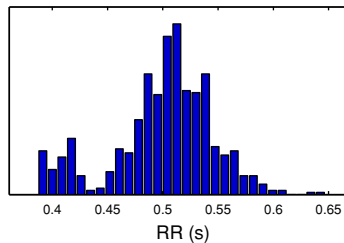
Selected RR Series



Time-Domain Results

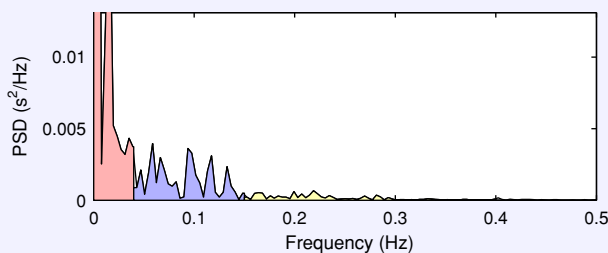
Variable	Units	Value
Mean RR*	(ms)	500.2
STD RR (SDNN)	(ms)	46.2
Mean HR*	(1/min)	121.05
STD HR	(1/min)	12.09
RMSSD	(ms)	8.0
NN50	(count)	0
pNN50	(%)	0.0
RR triangular index		8.675
TINN	(ms)	205.0

Distributions*



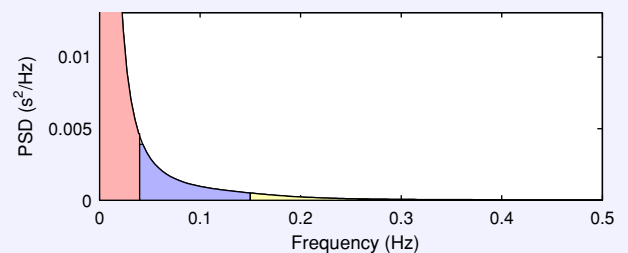
Frequency-Domain Results

FFT spectrum (Welch's periodogram: 256 s window with 50% overlap)



Frequency Band	Peak (Hz)	Power (ms²)	Power (%)	Power (n.u.)
VLF (0–0.04 Hz)	0.0000	741	78.8	
LF (0.04–0.15 Hz)	0.0586	161	17.1	80.9
HF (0.15–0.4 Hz)	0.2188	38	4.0	19.1
Total		939		
LF/HF		4.246		

AR Spectrum (AR model order = 16, not factorized)

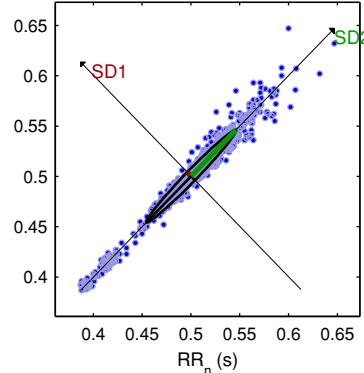


Frequency Band	Peak (Hz)	Power (ms²)	Power (%)	Power (n.u.)
VLF (0–0.04 Hz)	0.0039	1473	88.8	
LF (0.04–0.15 Hz)	0.0430	154	9.3	82.6
HF (0.15–0.4 Hz)	0.1523	32	2.0	17.4
Total		1660		
LF/HF		4.746		

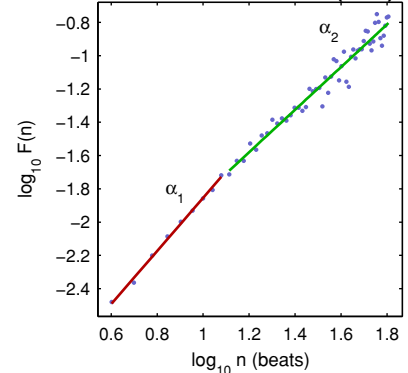
Nonlinear Results*

Variable	Units	Value
Poincare plot		
SD1	(ms)	5.7
SD2	(ms)	64.9
Recurrence plot		
Mean line length (Lmean)	(beats)	40.24
Max line length (Lmax)	(beats)	684
Recurrence rate (REC)	(%)	55.45
Determinism (DET)	(%)	99.94
Shannon Entropy (ShanEn)		4.538
Other		
Approximate entropy (ApEn)		0.477
Sample entropy (SampEn)		0.416
Detrended fluctuations (DFA): α_1		1.596
Detrended fluctuations (DFA): α_2		1.280
Correlation dimension (D2)		0.726

Poincare Plot



Detrended fluctuations (DFA)



*Results are calculated from the non-detrended selected RR series.