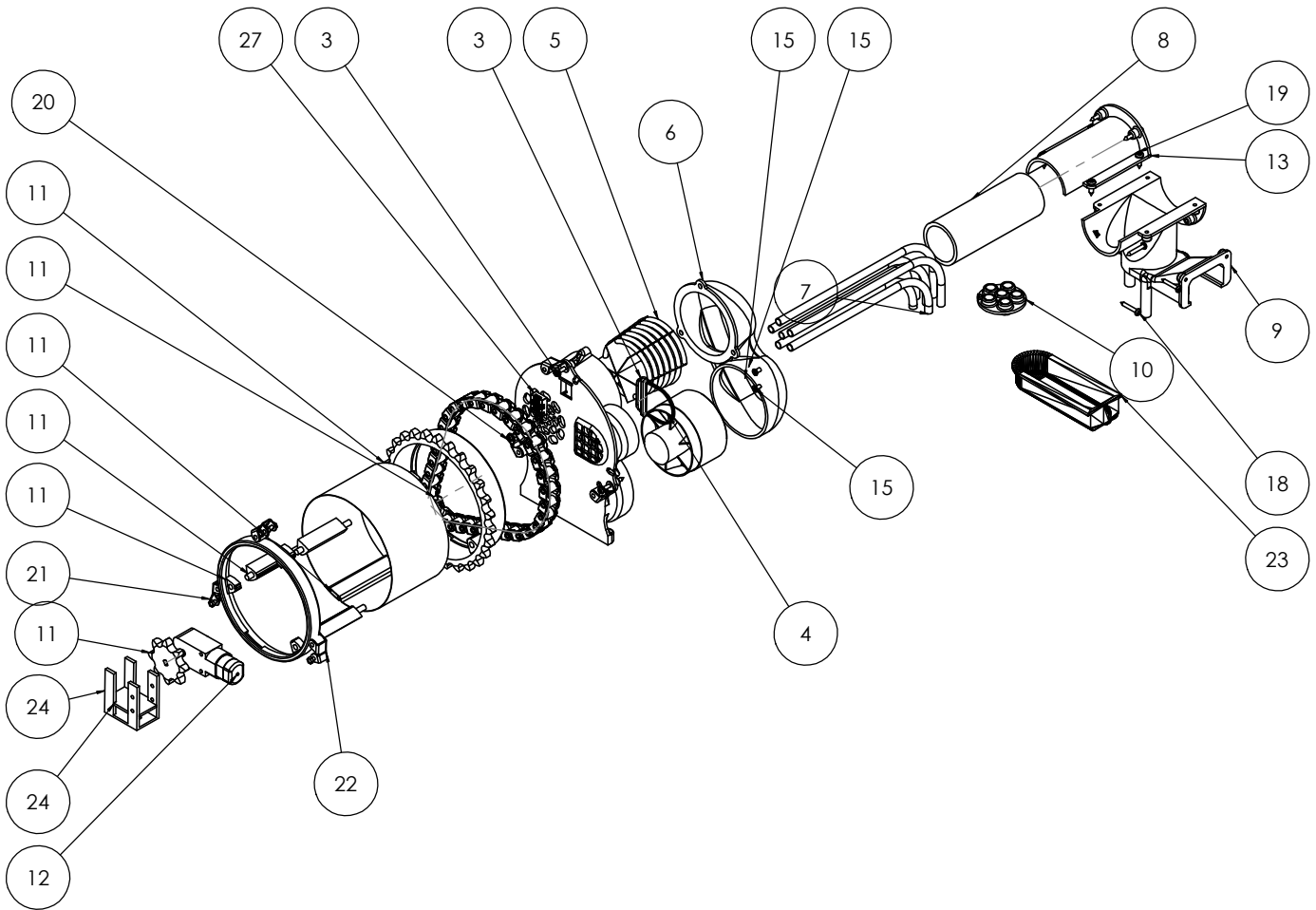


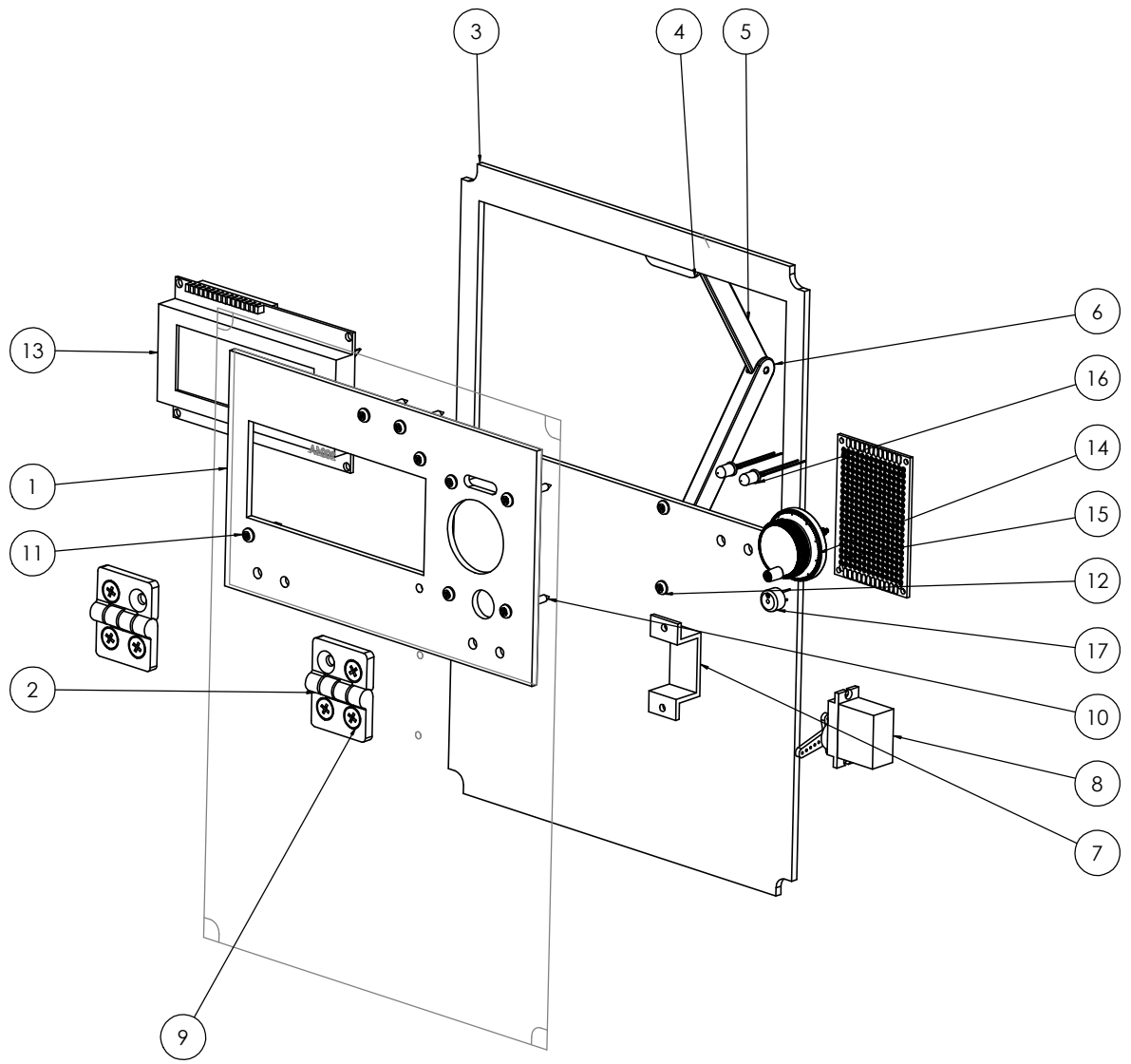
ITEM NO.	PART NUMBER	DESCRIPTION	QTY.
1	Al Extrusions Frame		1
2	Bottom Panel (Student)		1
3	Lint Filter and Airduct		1
4	Fan		1
5	Heater		1
6	U Turn		1
7	Copper Tubes	1.8 m per team	1
8	Clear Pipe	About 0.1 m per team, students cut the length they need	1
9	HX Outlet		1
10	Tube Holder		1
11	Assembly motor and drum		1
12	Yellow Motor		1
13	Heat Exchanger Top 1		1
14	Assem Popup 2		1
15	Assembly of Door		1
16	Water tray acrylic sheet	270 x 190	1
17	B18.6.7M - M3 x 0.5 x 6 Type I Cross Recessed FHMS --6N		2
18	Pan Head Self-Tapping Screw #4 3/4 inch		6
19	Pan Head Self-Tapping Screw #6 1 1/2"		4
20	Pan Head Self-Tapping Screw #4 1"		3
21	Roller		6
22	HEXTS 3x6X5.5-Indented head-D-N		7
23	Tray		1
24	Motor Support		1
25	acrylic sheet 1	270 x 190	1
26	Back Panel (cool) (1)		1
27	Sensor 1		1



<small>PROPRIETARY AND CONFIDENTIAL</small> <small>THE INFORMATION CONTAINED IN THIS DRAWING IS THE SOLE PROPERTY OF VANT11/2023S. IT IS NOT TO BE REPRODUCED OR TRANSMITTED IN ANY FORM OR BY ANY MEANS WITHOUT THE WRITTEN PERMISSION OF VANT11/2023S. THIS INFORMATION IS UNCLASSIFIED.</small>		The University of British Columbia TITLE: Team 1 Assembly	
VANT151/2023S <small>DO NOT SCALE DRAWING. DIMENSIONS ARE IN MM/INCH</small>		SIZE: D	DWG. NO.: Mechanical Design 1
		REV: 1	SCALE: 1:2 WEIGHT: 1/3 SHEET 1 OF 3

8 7 6 5 4 3 2 1

ITEM NO.	PART NUMBER	DESCRIPTION	QTY.
1	acrilyc popup front		1
2	Hinge		2
3	top part of acrylic		1
4	popup1		1
5	popup2		1
6	popup 3		1
7	popup 4		1
8	Servo SG60 Assembly		1
9	B18.6.7M - M4 x 0.7 x 6 Type I Cross Recessed FHMS -- 6N		6
10	Pan Head Self-Tapping Screw #4 1"		7
11	Pan Head Self-Tapping Screw #4 3/4 inch		1
12	Pan Head Self-Tapping Screw #4 1/4"		2
13	2004A_LCD_Display		1
14	Hand Wheel CNC Encoder		1
15	pcb_4x6.step		1
16	LED 5mm		2
17	Buzzer- Mallory PB-09N23P-03Q	XXXX	1



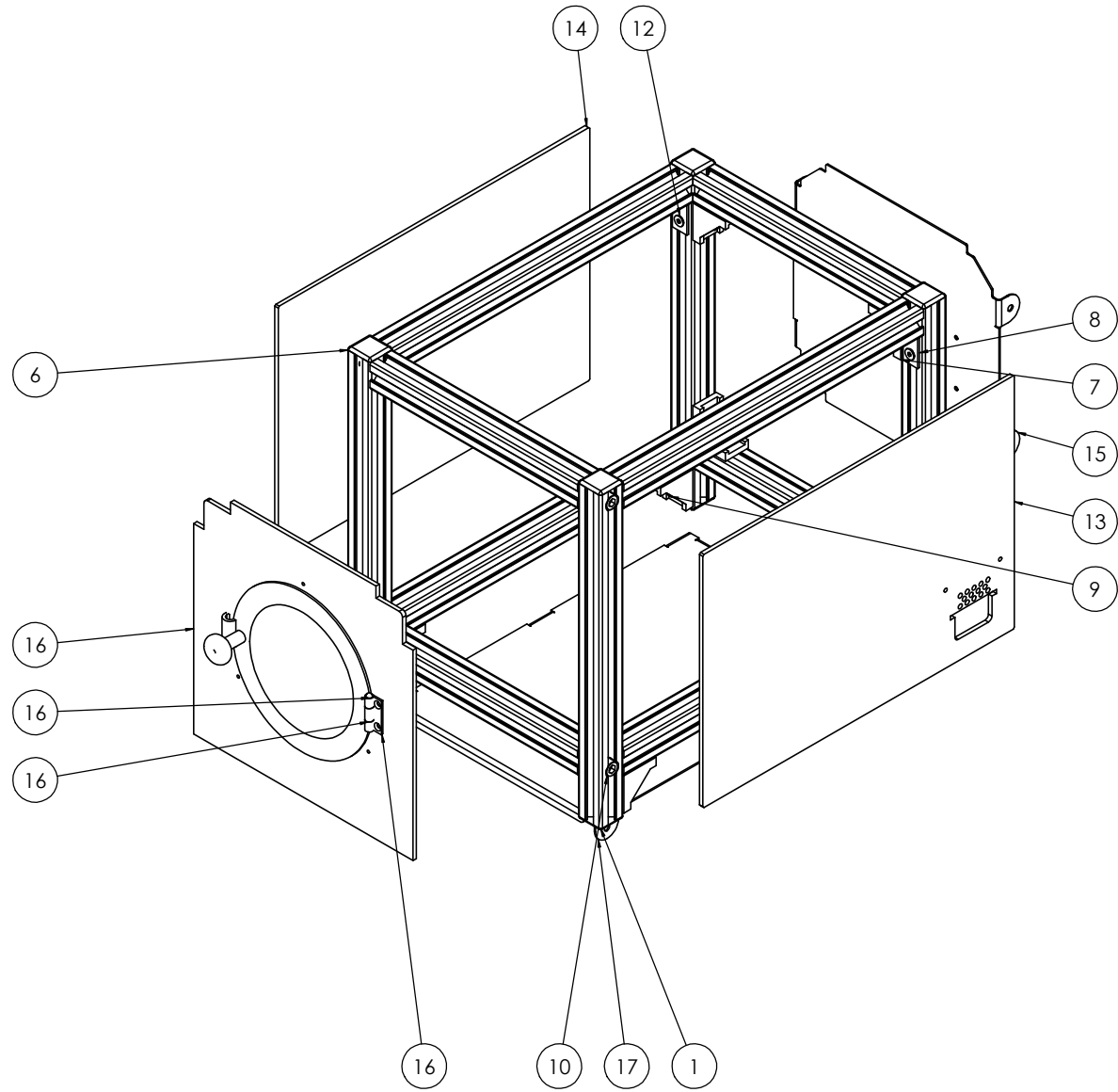
REVISIONS AND COMMENTS:
 THE INFORMATION CONTAINED IN THIS DRAWING IS THE SOLE PROPERTY OF VANT151/2023S Team 1. ANY REPRODUCTION IN PART OR AS A WHOLE WITHOUT THE WRITTEN PERMISSION OF VANT151/2023S Team 1 IS PROHIBITED.

VANT151/2023S
 DIMENSIONS ARE IN MM/INCHES
 DO NOT SCALE DRAWING

The University of British Columbia
 TITLE:
Team 1 Assembly

SIZE: D DWG. NO.: Top Part Design REV:
 SCALE: 1:2 WEIGHT: N/A SHEET 2 OF 3

ITEM NO.	PART NUMBER	DESCRIPTION	QTY.
1	2020 Al Extrusion	250 mm w Hole	2
2	2020 Al Extrusion	260 mm	4
3	2020 Al Extrusion	250 mm no Hole	2
4	2020 Al Extrusion	180 mm w Tapped Holes	2
5	2020 Al Extrusion	180 mm no Tap	2
6	2020 End Cap		8
7	2020 Corner Bracket		8
8	Sheet Corner Bracket		4
9	ISO 4762 M5 x 10 - 10N		16
10	ISO 4762 M6 x 25 - 25N		4
11	SAE #10 Washer		16
12	ISO 10642 - M4 x 8 - 8N		8
13	Acrylic - Water Tray	270 x 190	1
14	Acrylic Sheet	270 x 190	1
15	Back Panel		1
16	Door 1		1
17	Bottom Part		1



<small> PROPRIETARY AND CONFIDENTIAL THE INFORMATION CONTAINED IN THIS DRAWING IS THE SOLE PROPERTY OF VANTI 151 (2023S) Team 1. ANY REPRODUCTION IN PART OR AS A WHOLE WITHOUT THE WRITTEN PERMISSION OF VANTI 151 (2023S) Team 1 IS PROHIBITED. </small>		The University of British Columbia TITLE: Team 1 Assembly	
VANTI151/2023S	SIZE D	DWG. NO. Frame 1	REV
<small> DIMENSIONS ARE IN MM/INCH DO NOT SCALE DRAWING </small>		SCALE: 1:5 WEIGHT: N/G SHEET 3 OF 3	