

2

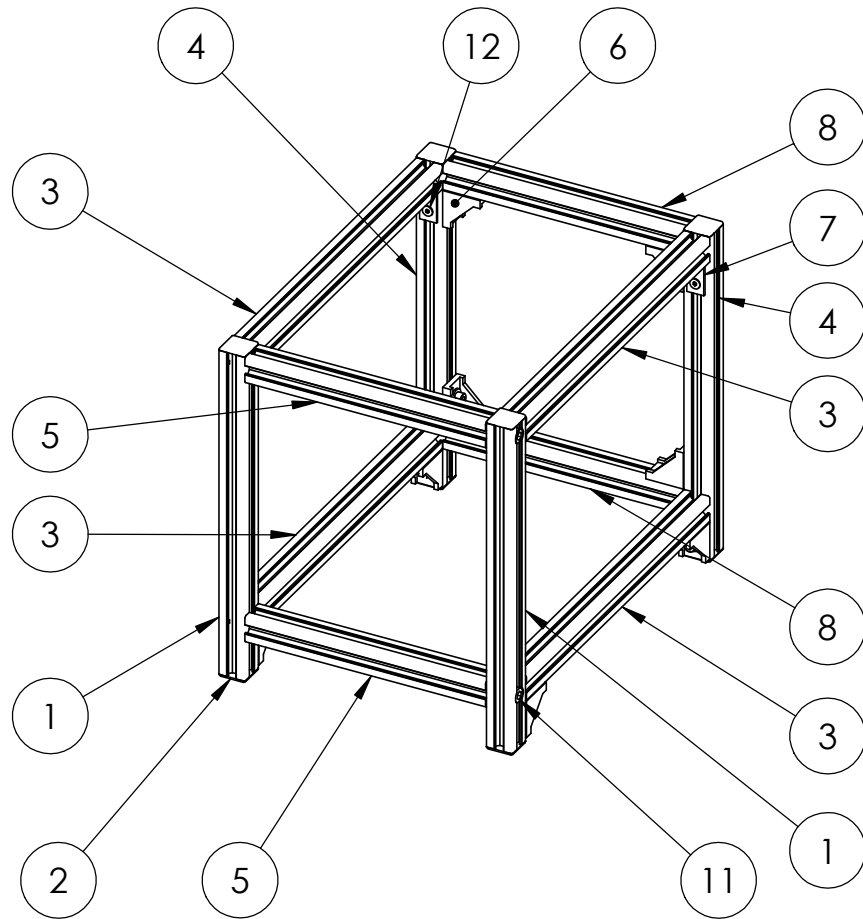
1

ITEM NO.	PART NUMBER	DESCRIPTION	QTY.
1	2020 Al Extrusion	250 mm w Hole	2
2	2020 End Cap		8
3	2020 Al Extrusion	260 mm	4
4	2020 Al Extrusion	250 mm no Hole	2
5	2020 Al Extrusion	180 mm w Tapped Holes	2
6	2020 Corner Bracket		8
7	Sheet Corner Bracket		4
8	2020 Al Extrusion	180 mm no Tap	2
9	ISO 4762 M5 x 10 - 10N	For 2020 Corner Bracket	16
10	SAE #10 Washer	For 2020 Corner Bracket	16
11	ISO 4762 M6 x 25 - 25N		4
12	ISO 10642 - M4 x 8 - 8N	For Sheet Corner Bracket	8

NOTE: COUNTERSUNK

(No number) M5 T-nuts 16 pcs

(No number) M4 T-nuts 8 pcs



B

B

A

A

		UNLESS OTHERWISE SPECIFIED:		NAME	DATE	TITLE:  <b>FRAME</b>							
		DIMENSIONS ARE IN INCHES TOLERANCES: FRACTIONAL ± ANGULAR: MACH ± BEND ± TWO PLACE DECIMAL ± THREE PLACE DECIMAL ±		DRAWN				SIZE <b>A</b>	DWG. NO.	REV			
		INTERPRET GEOMETRIC TOLERANCING PER:		CHECKED							SCALE: 1:5	WEIGHT:	SHEET 1 OF 6
		MATERIAL		ENG APPR.									
		FINISH		MFG APPR.									
NEXT ASSY	USED ON			Q.A.									
APPLICATION		DO NOT SCALE DRAWING		COMMENTS:									

**PROPRIETARY AND CONFIDENTIAL**  
THE INFORMATION CONTAINED IN THIS DRAWING IS THE SOLE PROPERTY OF <INSERT COMPANY NAME HERE>. ANY REPRODUCTION IN PART OR AS A WHOLE WITHOUT THE WRITTEN PERMISSION OF <INSERT COMPANY NAME HERE> IS PROHIBITED.

1

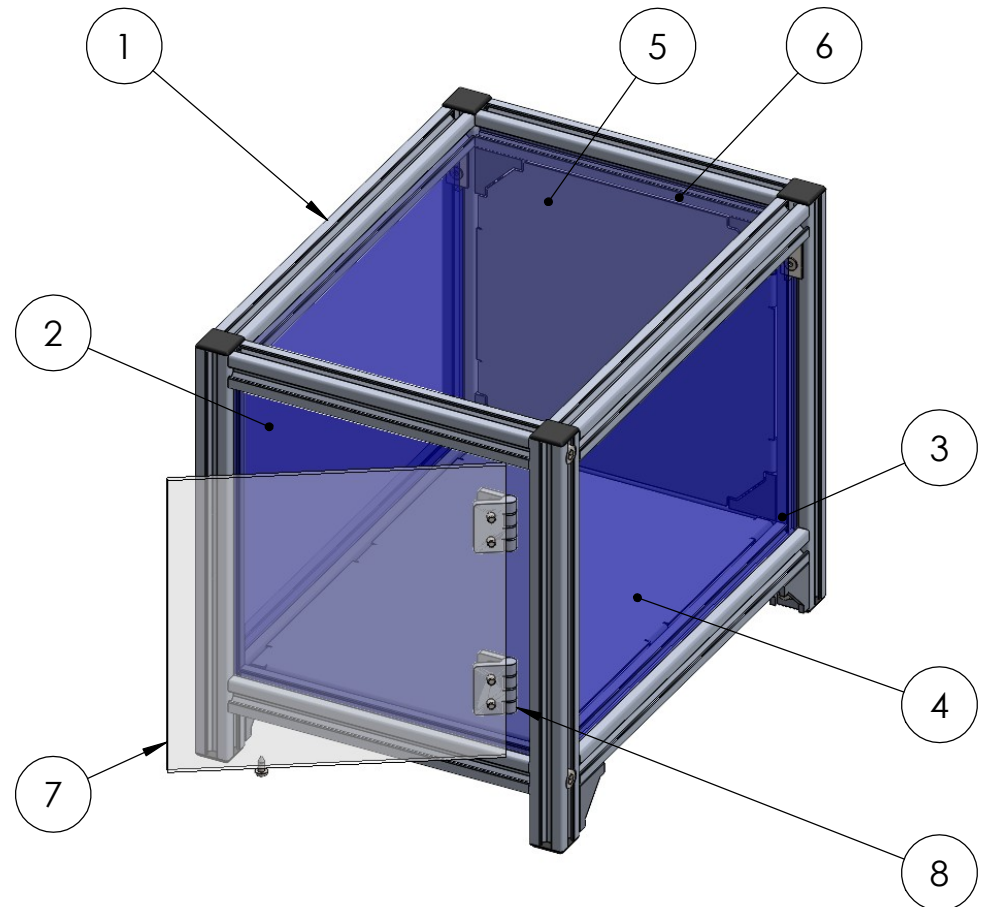
2

1

ITEM NO.	PART NUMBER	DESCRIPTION	QTY.
1	Al Extrusions Frame		1
2	Front & Side Wall (Student)	190 x 190	1
3	Front & Side Wall (Student)	270 x 190 w Corner Cuts	2
4	Bottom Panel (Student)		1
5	Back Panel (Student)		1
6	Top Panel (Student)	270 x 190	1
7	Door (Student)	180 x 180 to 190 x 190	1
8	Hinge		2
10	ISO 10642 - M4 x 8 - 8N	For Hinges	8
11	Pan Head Self-Tapping Screw #6 3/8"		1

B

B



A

A

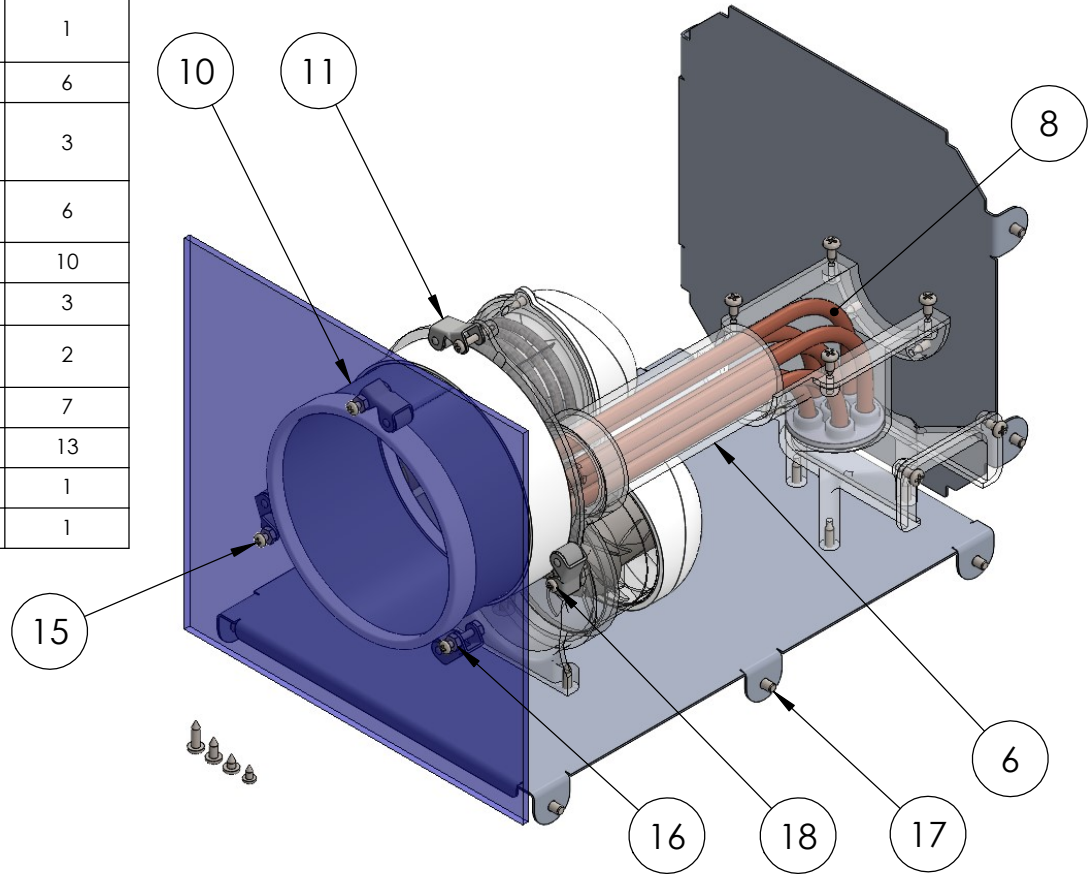
		UNLESS OTHERWISE SPECIFIED:		NAME	DATE	TITLE:  <b>Enclosure Overview</b>
		DIMENSIONS ARE IN INCHES	DRAWN			
		TOLERANCES:	CHECKED			
		FRACTIONAL ±	ENG APPR.			
		ANGULAR: MACH ± BEND ±	MFG APPR.			
		TWO PLACE DECIMAL ±	Q.A.			SIZE <b>A</b> DWG. NO. REV
		THREE PLACE DECIMAL ±	COMMENTS:			
		INTERPRET GEOMETRIC TOLERANCING PER:				SCALE: 1:4 WEIGHT: SHEET 2 OF 6
		MATERIAL				
		FINISH				
	NEXT ASSY	USED ON				
	APPLICATION		DO NOT SCALE DRAWING			

**PROPRIETARY AND CONFIDENTIAL**  
THE INFORMATION CONTAINED IN THIS DRAWING IS THE SOLE PROPERTY OF <INSERT COMPANY NAME HERE>. ANY REPRODUCTION IN PART OR AS A WHOLE WITHOUT THE WRITTEN PERMISSION OF <INSERT COMPANY NAME HERE> IS PROHIBITED.

1

ITEM NO.	PART NUMBER	DESCRIPTION	QTY.
6	Clear Pipe	About 0.1 m per team, students cut the length they need	1
8	Copper Tubes	1.8 m per team	1
10	Drum (Student)	Max. 0.15 m per team, students cut the length they need	1
11	Roller		6
15	CR-PHMS 0.112-40x0.75x0.75-C	#4-40 x 3/4" for outer rollers	3
16	MSHXNUT 0.112-40-S-N	#4-40 nuts, 2 per outer roller	6
17	ISO 4762 M4 x 6 - 6N	For aluminium panels	10
18	Pan Head Self-Tapping Screw #4 3\4 inch	For inner rollers	3
19	Pan Head Self-Tapping Screw #4 1"	For motor (hidden)	2
20	Pan Head Self-Tapping Screw #6 1\2"	Various locations	7
21	Pan Head Self-Tapping Screw #6 3\8"	Various location	13
22	Pan Head Self-Tapping Screw #6 1\4"	Spare	1
23	Pan Head Self-Tapping Screw #4 1\4"	Spare	1

(No number) M4 T-nuts 10 pcs



B

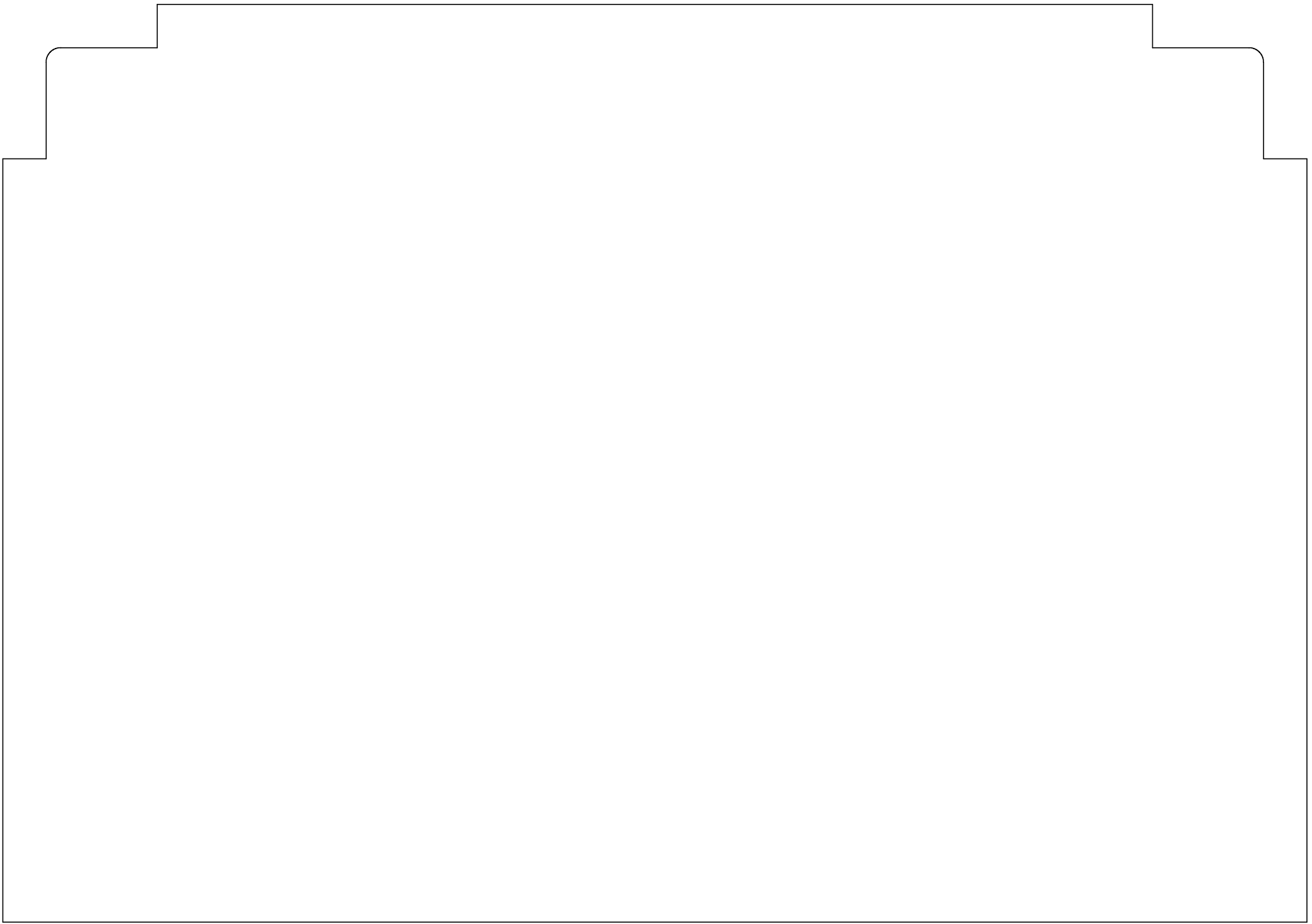
B

A

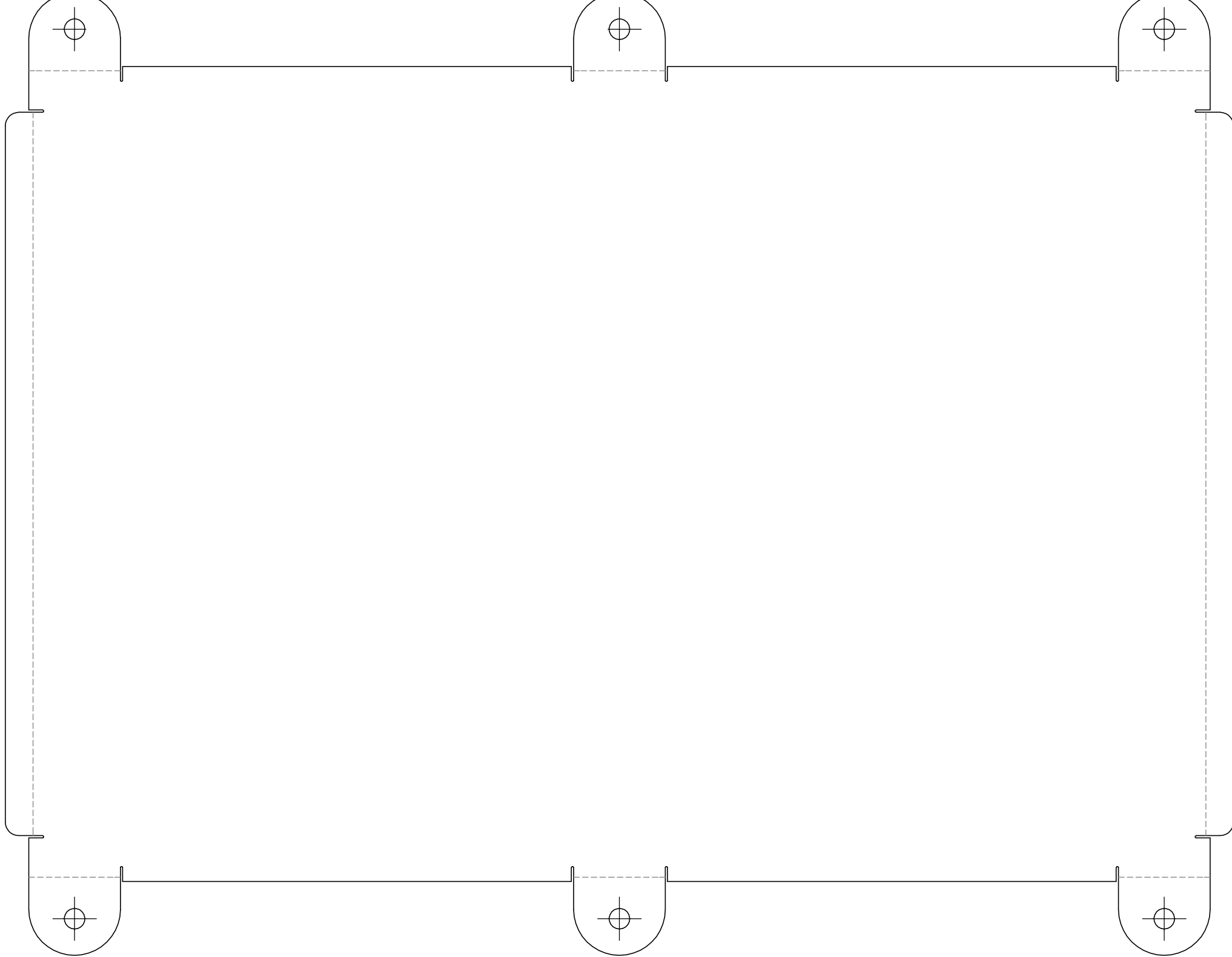
A

		UNLESS OTHERWISE SPECIFIED:	NAME	DATE	TITLE:  Internal Parts		
		DIMENSIONS ARE IN INCHES	DRAWN				
		TOLERANCES:	CHECKED				
		FRACTIONAL ±	ENG APPR.				
		ANGULAR: MACH ± BEND ±	MFG APPR.				
		TWO PLACE DECIMAL ±	Q.A.		SIZE	DWG. NO.	REV
		THREE PLACE DECIMAL ±	COMMENTS:		<b>A</b>		
		INTERPRET GEOMETRIC TOLERANCING PER:			SCALE: 1:3	WEIGHT:	SHEET 3 OF 6
		MATERIAL					
NEXT ASSY	USED ON	FINISH					
APPLICATION		DO NOT SCALE DRAWING					

**PROPRIETARY AND CONFIDENTIAL**  
THE INFORMATION CONTAINED IN THIS DRAWING IS THE SOLE PROPERTY OF <INSERT COMPANY NAME HERE>. ANY REPRODUCTION IN PART OR AS A WHOLE WITHOUT THE WRITTEN PERMISSION OF <INSERT COMPANY NAME HERE> IS PROHIBITED.

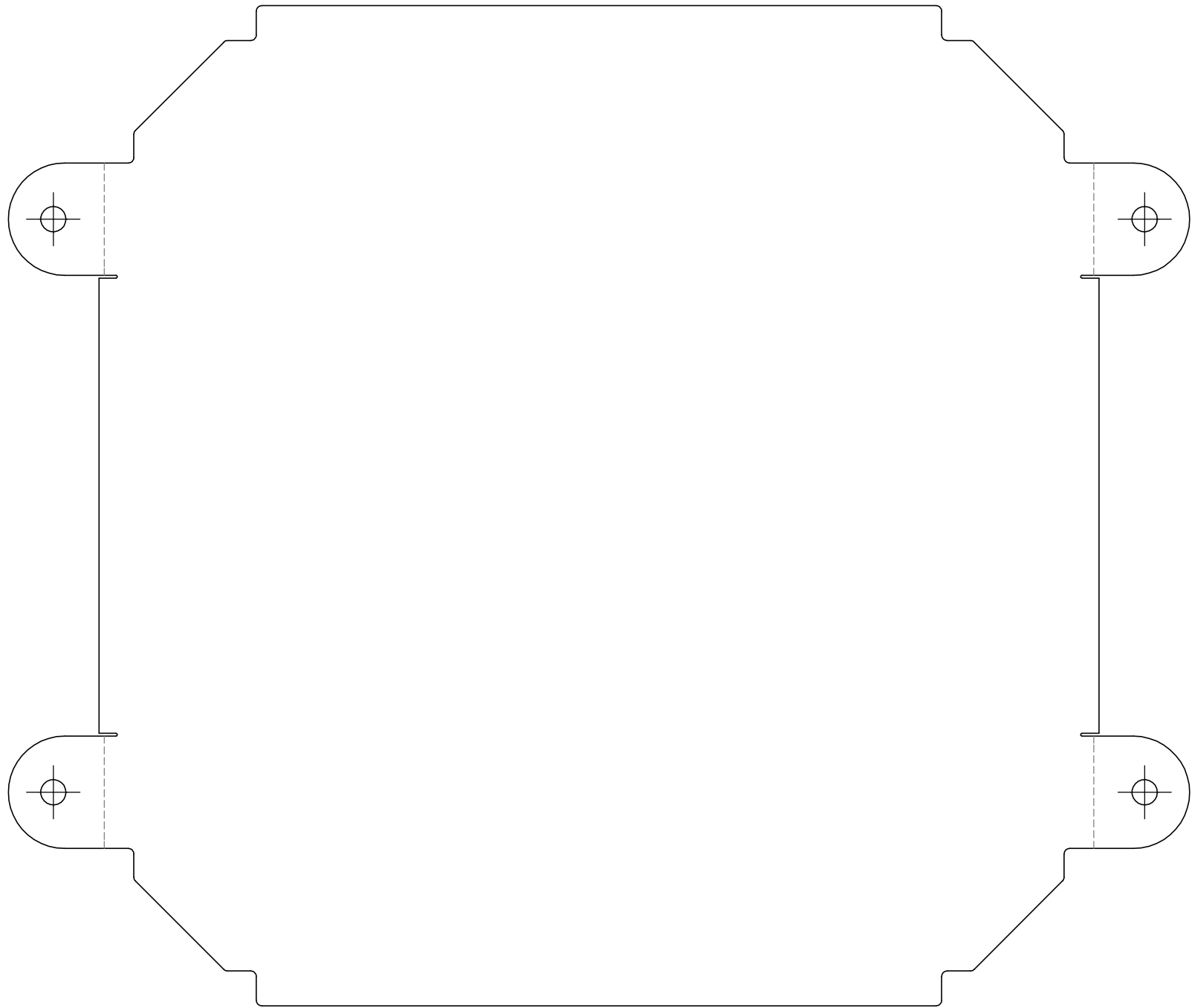


Side Wall for laser cutting, 3 mm thick acrylic, scale 1:1



**SOLIDWORKS Educational Product. For Instructional Use Only.**

mm thick (18 gauge) aluminium, no need to bend, scale 1:1



Back Panel for water jet cutting, 1 mm thick (18 gauge) aluminium, no need to bend, scale 1:1