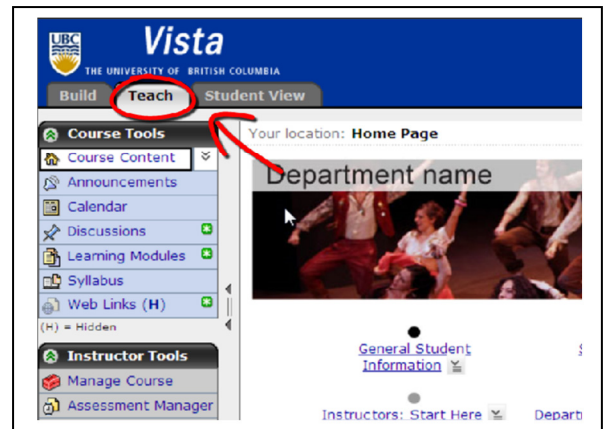


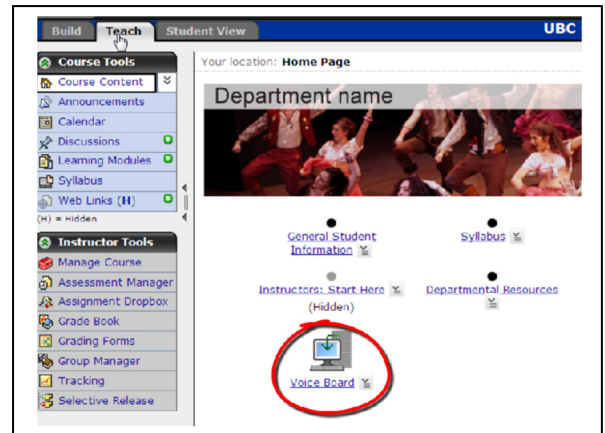
## WIMBA VOICEBOARD

### Voice Board Management of Input/Output Settings

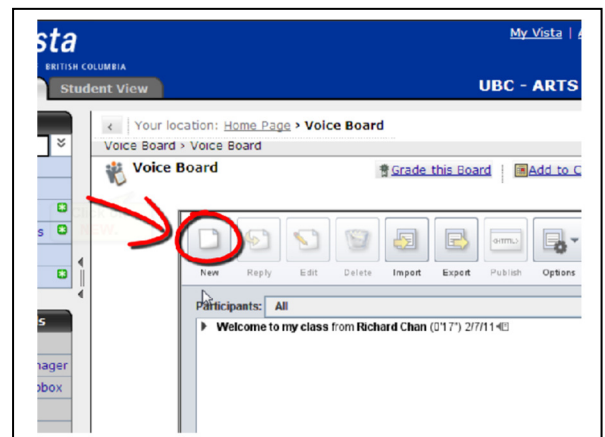
1. Switch to the Teach tab.



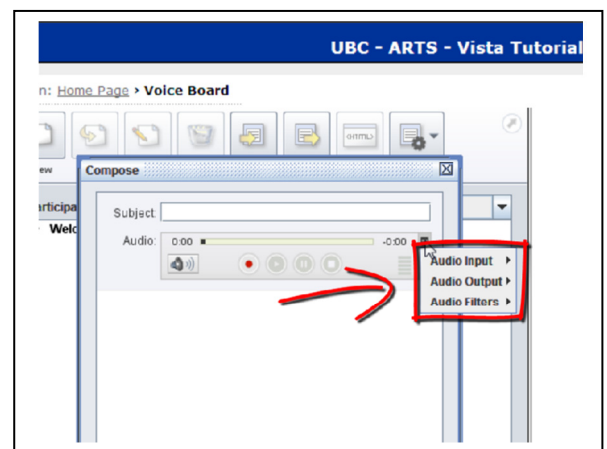
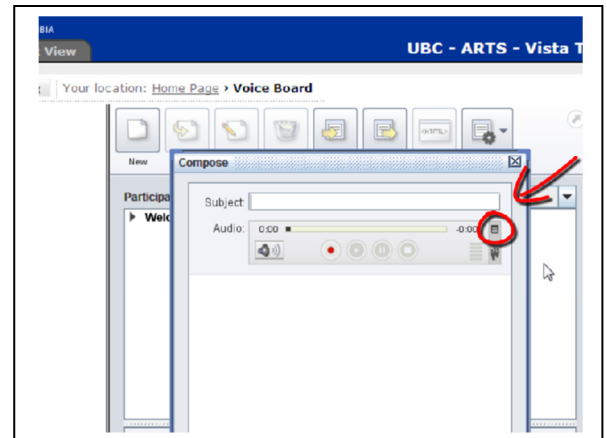
2. Click on your Voice Board.



3. You will be directed to a new page. Click on the "New" icon.



4. A new pop-up window will appear. Click on the button in the far right corner and a drop down menu will appear.



5. You will be able to choose where you want your audio to be coming from. The circle beside the device you have chosen will be filled for the options you have selected.

