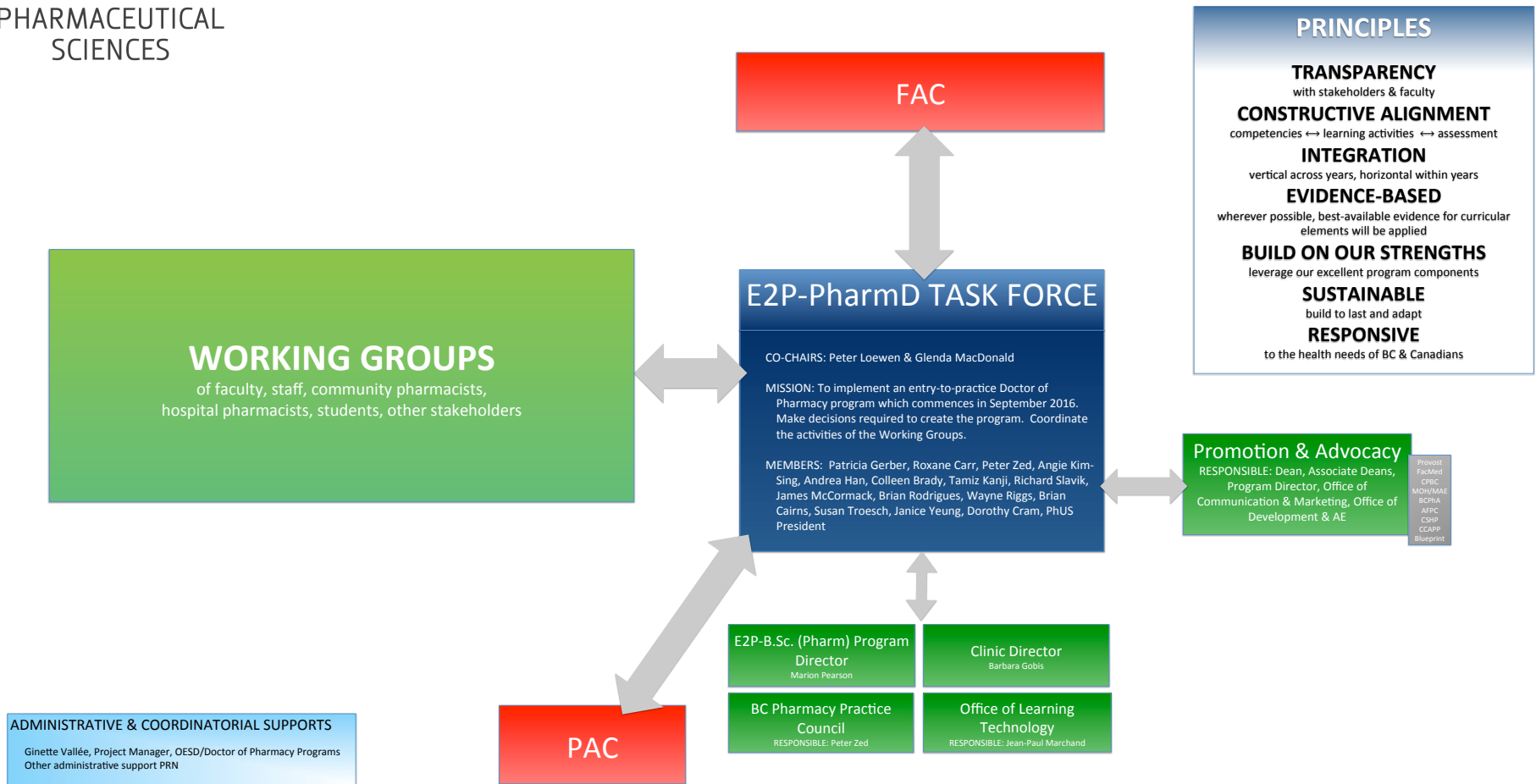


# Building UBC's Next Pharmacy First Professional Degree Program

## Program Development Structure | E2P-PharmD



# Building UBC's Next Pharmacy First Professional Degree Program

## Program Development Structure | E2P-PharmD

**PHASE 1**  
Oct 2012-Jul 2013  
Working Groups

### Working Groups



**ADMINISTRATIVE & COORDINATORIAL SUPPORTS**  
Ginette Vallée, Project Manager, OESD/Doctor of Pharmacy Programs  
Other administrative support PRN

**PRINCIPLES**

- TRANSPARENCY**  
with stakeholders & faculty
- CONSTRUCTIVE ALIGNMENT**  
competencies ↔ learning activities ↔ assessment
- INTEGRATION**  
vertical across years, horizontal within years
- EVIDENCE-BASED**  
wherever possible, best-available evidence for curricular elements will be applied
- BUILD ON OUR STRENGTHS**  
leverage our excellent program components
- SUSTAINABLE**  
build to last and adapt
- RESPONSIVE**  
to the health needs of BC & Canadians

**E2P-PharmD TASK FORCE**

CO-CHAIRS: Peter Loewen & Glenda MacDonald

MISSION: To implement an entry-to-practice Doctor of Pharmacy program which commences in September 2016. Make decisions required to create the program. Coordinate the activities of the Working Groups.

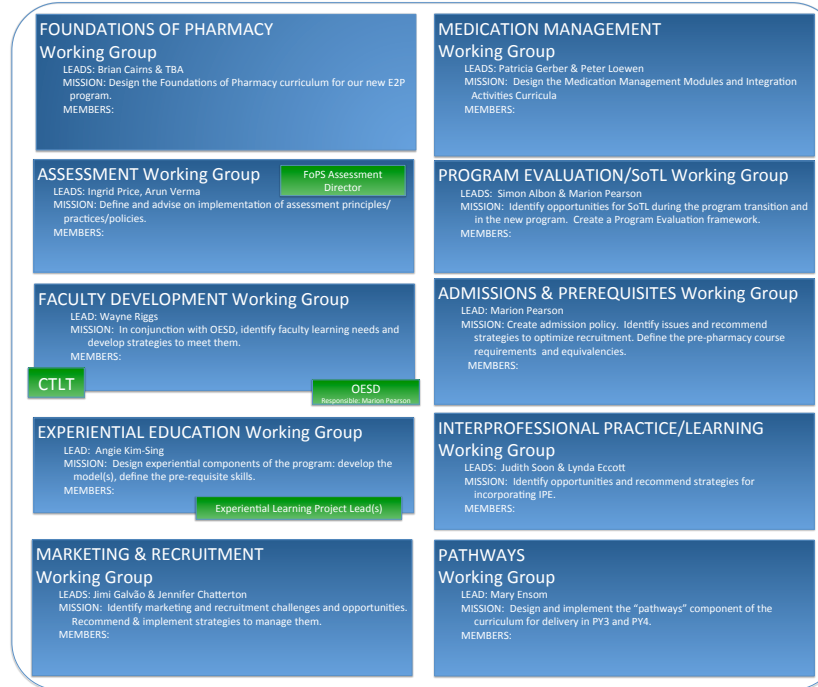
MEMBERS: Patricia Gerber, Roxane Carr, Peter Zed, Angie Kim-Sing, Andrea Han, Colleen Brady, Tamiz Kanji, Richard Slavik, James McCormack, Brian Rodrigues, Wayne Riggs, Brian Cairns, Susan Troesch, Janice Yeung, Dorothy Cram, PHUS President

# Building UBC's Next Pharmacy First Professional Degree Program

## Program Development Structure | E2P-PharmD

**PHASE 2**  
Jul 2013-Jul 2014  
Working Groups

### Working Groups



### ADMINISTRATIVE & COORDINATORIAL SUPPORTS

Ginette Vallée, Project Manager, OESD/Doctor of Pharmacy Programs  
Other administrative support PRN

### PRINCIPLES

- TRANSPARENCY**  
with stakeholders & faculty
- CONSTRUCTIVE ALIGNMENT**  
competencies ↔ learning activities ↔ assessment
- INTEGRATION**  
vertical across years, horizontal within years
- EVIDENCE-BASED**  
wherever possible, best-available evidence for curricular elements will be applied
- BUILD ON OUR STRENGTHS**  
leverage our excellent program components
- SUSTAINABLE**  
build to last and adapt
- RESPONSIVE**  
to the health needs of BC & Canadians

### E2P-PharmD TASK FORCE

CO-CHAIRS: Peter Loewen & Glenda MacDonald

MISSION: To implement an entry-to-practice Doctor of Pharmacy program which commences in September 2016. Make decisions required to create the program. Coordinate the activities of the Working Groups.

MEMBERS: Patricia Gerber, Roxane Carr, Peter Zed, Angie Kim-Sing, Andrea Han, Colleen Brady, Tamiz Kanji, Richard Slavik, James McCormack, Brian Rodrigues, Wayne Riggs, Brian Cairns, Susan Troesch, Janice Yeung, Dorothy Cram, PHUS President

# Building UBC's Next Pharmacy First Professional Degree Program

## Program Development Structure | E2P-PharmD

### Focus on Working Groups



### PRINCIPLES

**TRANSPARENCY**  
with stakeholders & faculty

**CONSTRUCTIVE ALIGNMENT**  
competencies ↔ learning activities ↔ assessment

**INTEGRATION**  
vertical across years, horizontal within years

**EVIDENCE-BASED**  
wherever possible, best-available evidence for curricular elements will be applied

**BUILD ON OUR STRENGTHS**  
leverage our excellent program components

**SUSTAINABLE**  
build to last and adapt

**RESPONSIVE**  
to the health needs of BC & Canadians

### E2P-PharmD TASK FORCE

CO-CHAIRS: Peter Loewen & Glenda MacDonald

MISSION: To implement an entry-to-practice Doctor of Pharmacy program which commences in September 2016. Make decisions required to create the program. Coordinate the activities of the Working Groups.

MEMBERS: Patricia Gerber, Roxane Carr, Peter Zed, Angie Kim-Sing, Colleen Brady, Tamiz Kanji, Richard Slavik, James McCormack, Brian Rodrigues, Wayne Riggs, Brian Cairns, Susan Troesch, Janice Yeung, Dorothy Cram, PHUS President

### ADMINISTRATIVE & COORDINATORIAL SUPPORTS

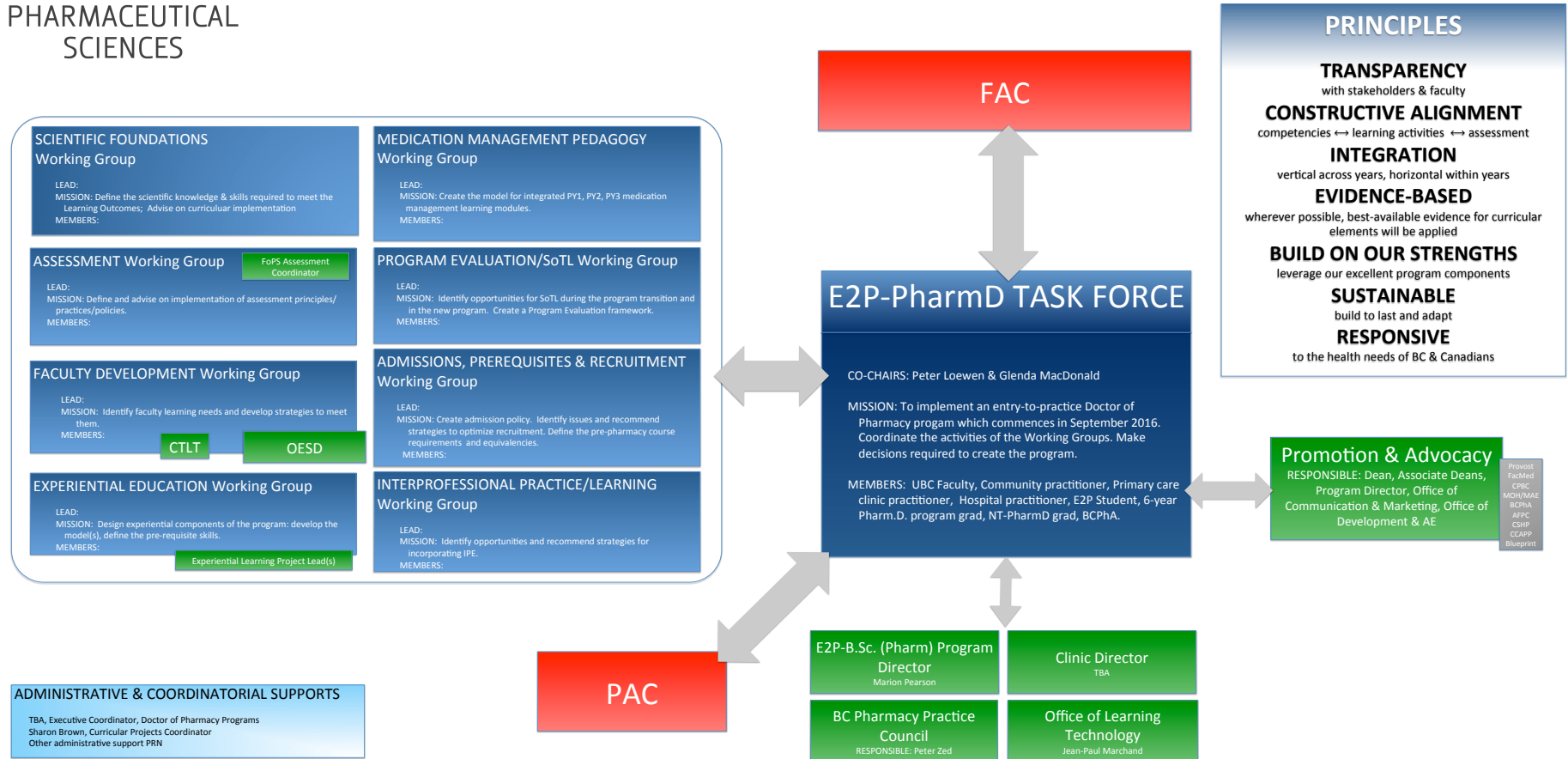
TBA, Executive Coordinator, Doctor of Pharmacy Programs  
Sharon Brown, Curricular Projects Coordinator  
Other administrative support PRN



THE UNIVERSITY OF BRITISH COLUMBIA  
**PHARMACEUTICAL  
 SCIENCES**

# Building UBC's Next Pharmacy First Professional Degree Program

## Program Development Structure | E2P-PharmD



updated 26OCT12peter.loewen@ubc.ca